

Follow all appropriate electrical codes and use only approved electrical fittings for the installation. If 120VAC power is provided to the Auxiliary Relay the enclosure must be properly grounded to the surge arrestor.

1. Ensure that none of the electrical connection circuits are live.
2. No other telephones may be installed on the HDE extension.
3. Remove the cover screws from the front of the unit and carefully remove the front cover assembly. Note that the electronics are attached to the front plate.

Note Verify regulatory requirements before installing on public network.

4. If an additional cable entrance is required punch a hole in the enclosure in a convenient location. Ensure that the fittings and wiring will not interfere with the circuit board when the faceplate is replaced.
5. Choose a wall location that is free of obstructions and permits space for cable or conduit runs. See the mounting template on the last page of this placemat.
6. Ensure mounting can support 7 lbs (3 kg) and any additional foreseeable load.
7. Use the template provided or the enclosure itself to locate and drill holes for #8 or M4 mounting screws.
8. Secure the unit to the wall or desired installation location.
9. For convenience, while connecting wiring, the faceplate may be temporarily mounted inverted to either side of the enclosure. See the following figure:



The faceplate is mounted inverted on the side of the enclosure

Commissioning

1. Ensure all connections are tight, then replace and secure the cover. Use the driver bit provided to install the tamper resistant screws. Store the driver bit in a secure place for future use.
2. Connect the telephone into the system.
3. Test the unit by calling to and from another telephone.

Contacting CyberData

Corporate Headquarters

CyberData Corporation
3 Justin Court
Monterey, CA 93940, USA

Phone: 831-373-2601
Fax: 831-373-4193
<http://www.cyberdata.net/>

Sales: (831) 373-2601 ext. 334
Support: 831-373-2601 ext. 333
Support Website: <http://support.cyberdata.net/>
RMA Department: (831) 373-2601 ext. 136
RMA Email: RMA@CyberData.net
RMA Status: <http://support.cyberdata.net/>
Warranty Information: <http://support.cyberdata.net/>

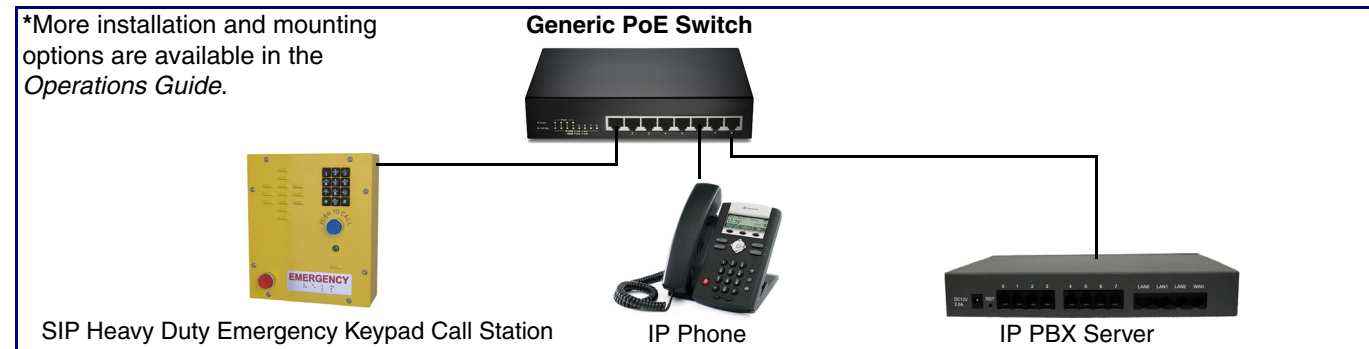
SIP Heavy Duty Emergency Keypad Call Station
SIP Compliant
011463



Parameter	Factory Default Setting
IP Addressing	DHCP
IP Address ^a	10.10.10.10
Web Access Username	admin
Web Access Password	admin
Subnet Mask ^a	255.0.0.0
Default Gateway ^a	10.0.0.1

a. Default if there is not a DHCP server present.

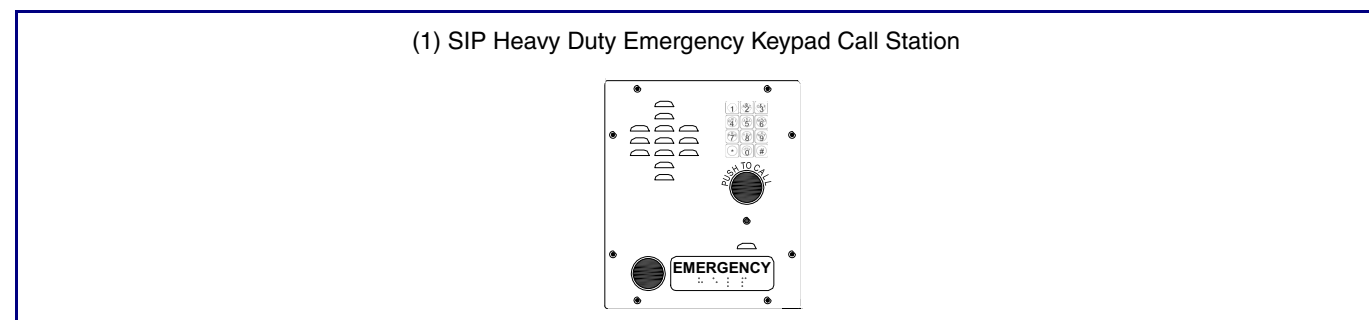
Typical System Installation



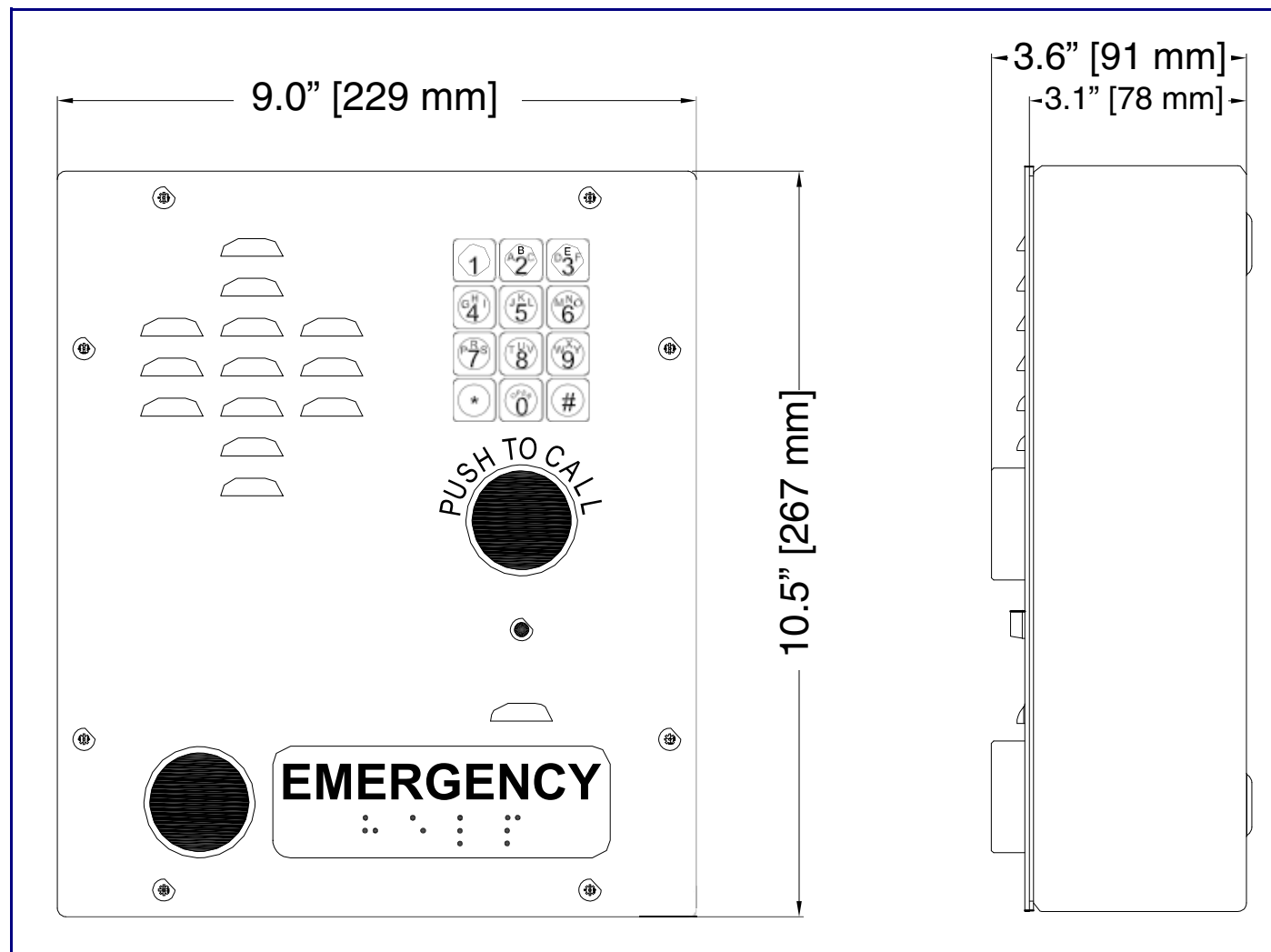
Getting Started

- Download the *Operations Guide* PDF file, from the **Downloads** tab at the following webpage:
<http://www.cyberdata.net/voip/011463/>
- Create a plan for the locations of your SIP Heavy Duty Emergency Keypad Call Stations.
- **WARNING: This product should be installed by a licensed electrician according to all local electrical and building codes.**
- **WARNING: To prevent injury, this apparatus must be securely attached to the floor/wall in accordance with the installation instructions.**
- **WARNING: The PoE connector is intended for intra-building connections only and does not route to the outside plant.**
- **WARNING: This enclosure is not rated for any AC voltages!**

Parts

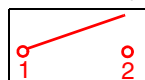


Dimensions



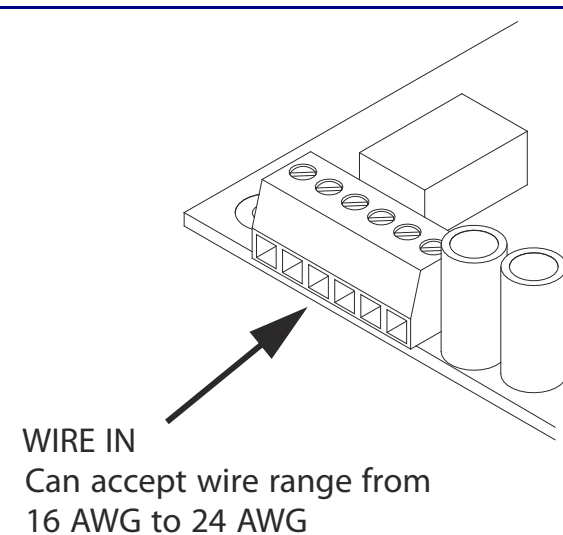
Terminal Block Connections

Alternate Power Input:
 1 = Normally Open Common
 2 = Normally Open Contact

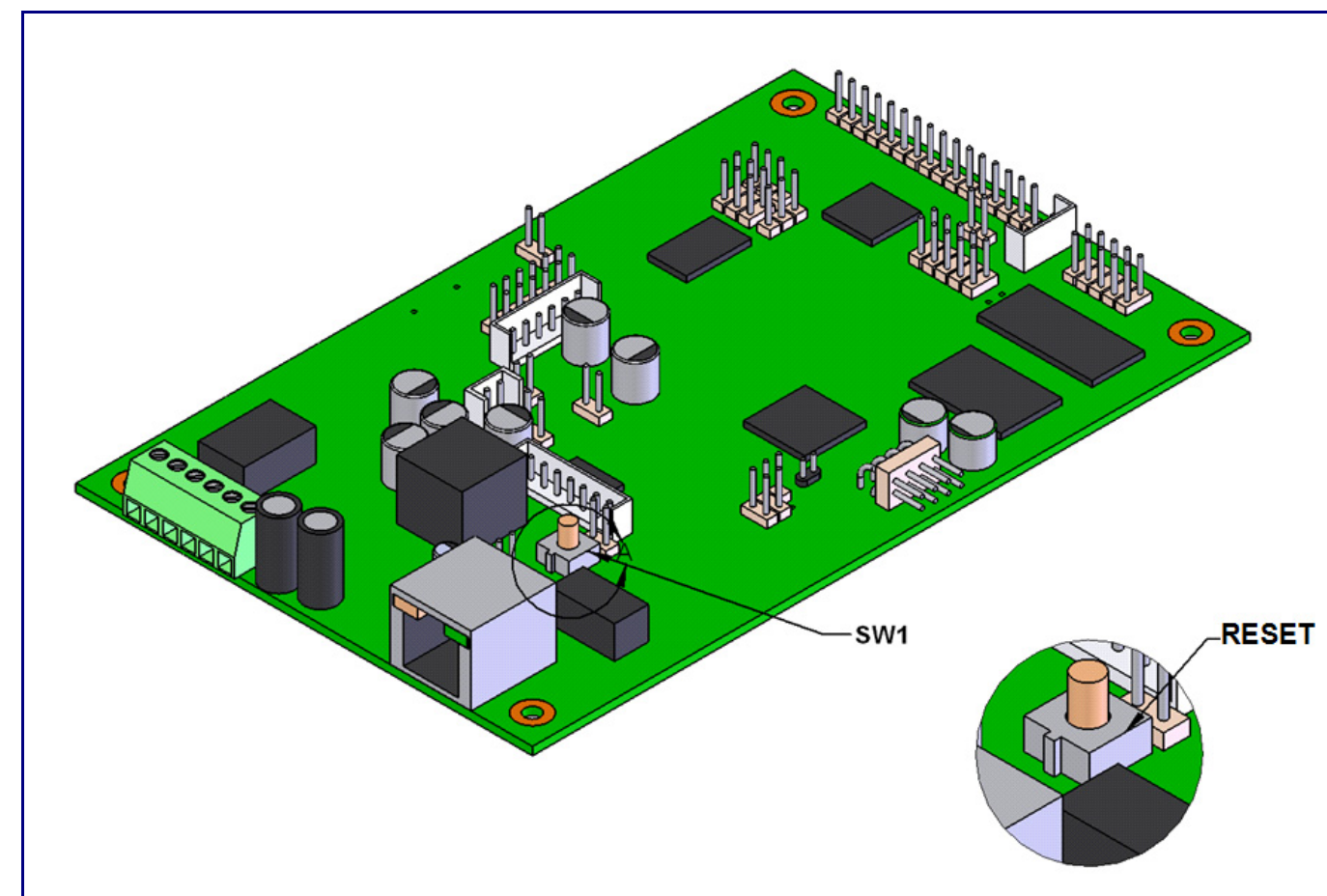


Relay Contact:
 (0.5 A at 30 VDC for continuous loads)
 3 = +24 VDC @ 1000mA
 4 = Power Ground
 5 = Ringer +
 6 = Ringer -

*Contacts 3 and 4 on the terminal block are only for powering the device from a non-PoE +24 VDC power source as an alternative to Network PoE power. Use of these contacts for any other purpose will damage the device and void the product warranty.



Reset Test Function Management (RESET) Switch



When the device is operational and linked to the network, use the Reset Test Function Management (**RESET**) switch on the board (see picture) to announce the device's IP address and test that the audio is working. During the IP address announcement, you will hear the IP address of your device through the handset receiver.

To announce the device's current IP address:

1. Press and hold for two seconds.
2. Release the **RESET** switch (see **SW1** in the figure above).

Note The device will use DHCP to obtain the new IP address (DHCP-assigned address or default to 10.10.10.10 if a DHCP server is not present).

Note Pressing and holding the **RESET** switch for longer than five seconds will restore the device to the factory default settings.

To restore the device to factory default settings:

When troubleshooting configuration problems, it is sometimes convenient to restore the device to a known state.

Note Each device is delivered with factory set default values.

To restore the factory default settings:

1. Press and hold the **RESET** switch (see **SW1** in the figure above) until the device announces it is restoring to factory defaults (approximately 5 seconds).
2. Release the **RESET** switch.

Note The device will use DHCP to obtain the new IP address (DHCP-assigned address or default to 10.10.10.10 if a DHCP server is not present).

