

Which Device Is Right For My Environment? **CyberData**

The IP Endpoint Company

A comparison of CyberData's Loudspeaker & Paging Amplifier With Horns VS SIP or Singlewire IP66 Outdoor Horn



SIP

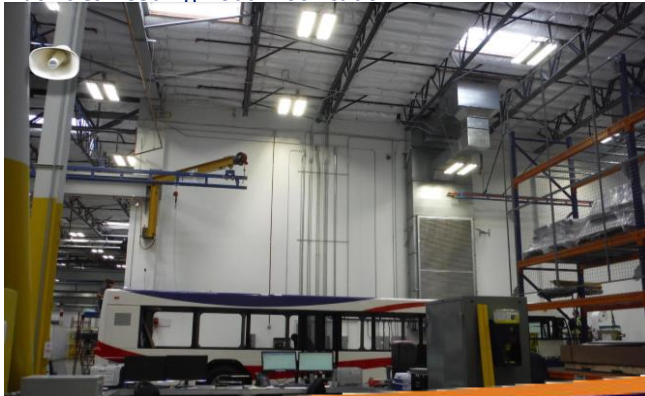
Part#: 011324 Paging Amp
011404 LS Amp AC
011405 LS Amp, PoE
011471 IP66 Outdoor Analog Horn

Singlewire InformaCast

011403 Paging Amp
011406 LS Amp, AC
011407 LS Amp, PoE

- External strobe support for visual notification
- AC powered or PoE powered 802.3at
- Analog IP66 horn sold separately, requires separate speaker wiring to Amplifier
- Line in for background music
- DTMF Controlled Relay Digital or manual volume control
- Door sense input to activate message or make a call
- IP 55 rated enclosure
- 802.3at SPL 117DB @ 1 meter (Single 8 Ohm CD horn)

Use case: Warehouses, manufacturing facilities, large indoor open areas where the use of two speakers can be used for bi-directional sound & maximum coverage as well as facilities needing visual notification.



SIP

Part#: 011457 IP66 Horn

Singlewire InformaCast

011472 SW IP66 Horn

- All in one product
- Easy to install, no additional wiring of external speakers
- PoE powered 802.3at
- IP66 outdoor rated
- 802.3at SPL 117DB @ 1 meter

Use case: Outdoor and indoor areas that need a single all in one PoE solution. Areas that do not require bi-directional sound.



011457 SIP IP66 Outdoor Horn