

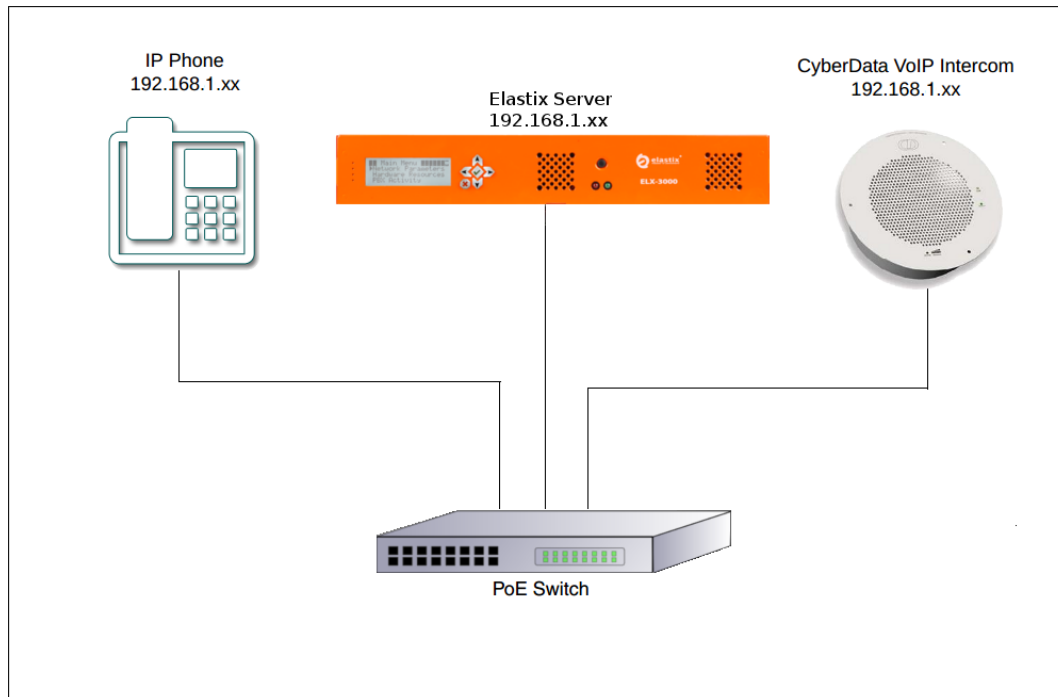


## *VoIP Ceiling Speaker with Elastix Server Setup Guide*

## 1.0 Setup Diagram

Figure 1-1 is a setup diagram for a single VoIP Ceiling Speaker configuration. In this configuration, the VoIP Ceiling Speaker acts as a standalone SIP telephony device.

**Figure 1-1. Setup Diagram**



## 2.0 Host PC Environment

**Table 2-1. Host Server Environment Details**

	Description
Hardware Type	Elastix Appliance ELX-Series
Hardware Version	ELX-3000
Software Type	Elastix
Software Version	2.2

## 3.0 Test Setup Equipment

**Table 3-1. Test Setup Equipment**

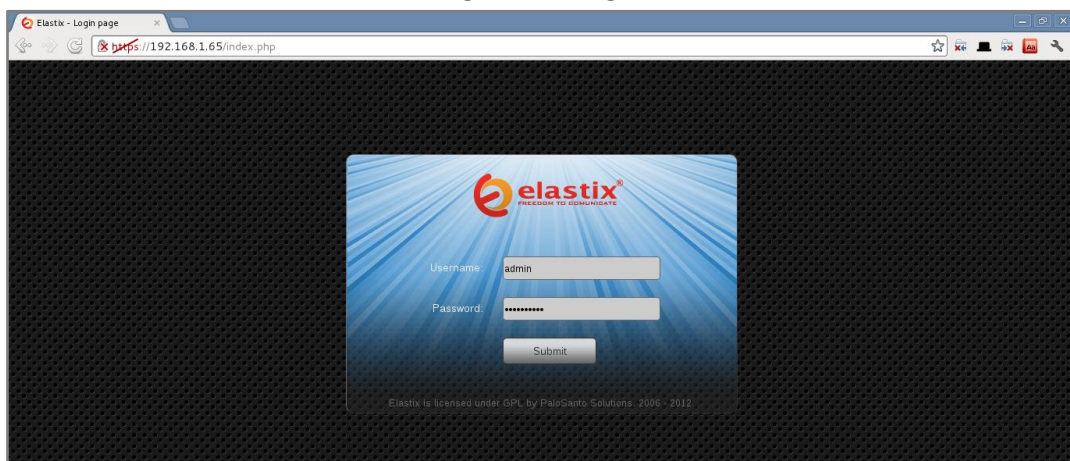
Equipment	Model	Version
IP (SIP) Phone	N/A	N/A
CyberData VoIP Ceiling Speaker	011098B	6.3.0
PoE Switch	N/A	N/A

## 4.0 Setup Procedure

### To set up the Elastix Server for the CyberData VoIP Ceiling Speaker,

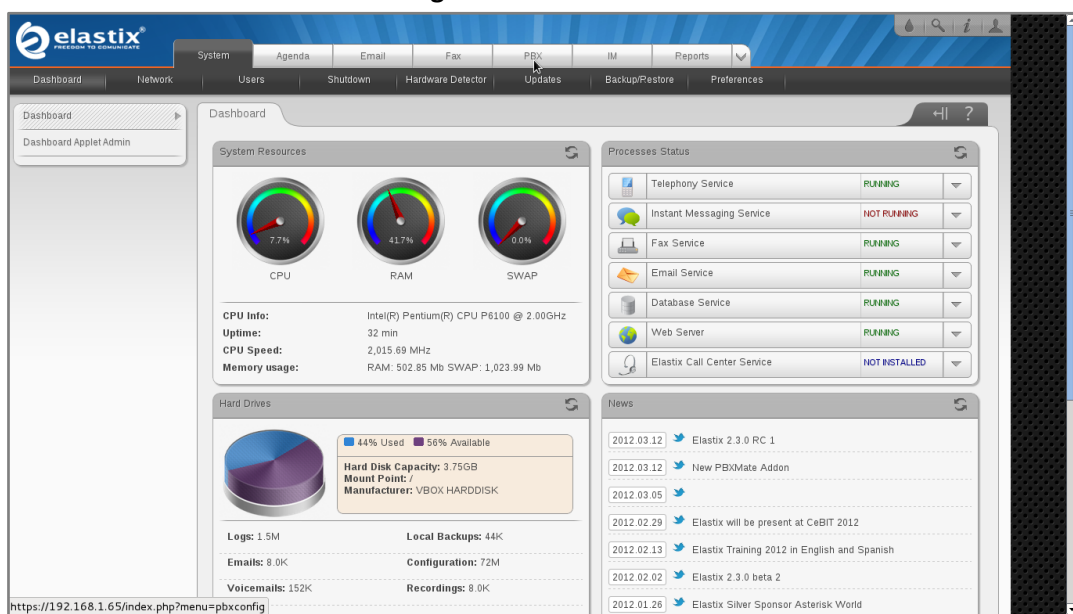
1. Go to the web address of the Elastix Server Login page. The web address is determined by the customer, for this guide we have used the IP address 192.168.1.65
2. On the Login page, type the username and password for an administrative user into the Username: and Password: fields, see Figure 4-1. The user name and password are determined by the customer.

Figure 4-1. Login



3. Press Enter or click on the Submit button to go to Elastix's Dashboard
4. Once inside, click on the PBX tab on the menu at the top of the screen

Figure 4-2. Dashboard



5. Click on the Submit button to add an extension, see Figure 4-3. This will take you to the Add SIP Extension page, see Figure 4-4.

**Figure 4-3. Add an Extension**

6. On the Add SIP Extension page (Figure 4-4), fill in the following information:

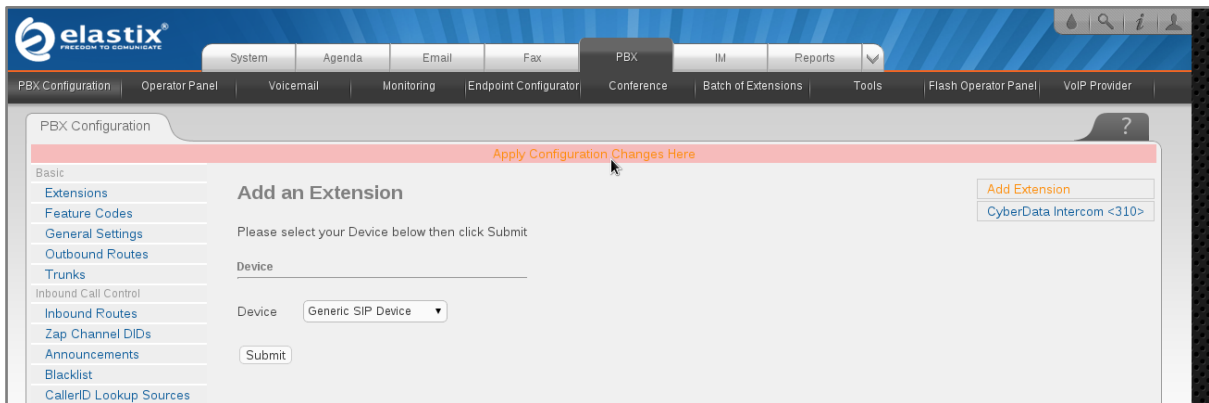
- **User Extension** (310 in this example)
- **Display Name** ('CyberData Ceiling Speaker' in this example)
- **secret** ('43f0j93f099y8' in this example)

**Figure 4-4. Add SIP Extension**

7. Click on the 'Submit' button at the end of the page. The extension will be created and you will see the page on Figure 4-5 displaying the "Apply Configuration Changes Here" pink ribbon on top of the screen.

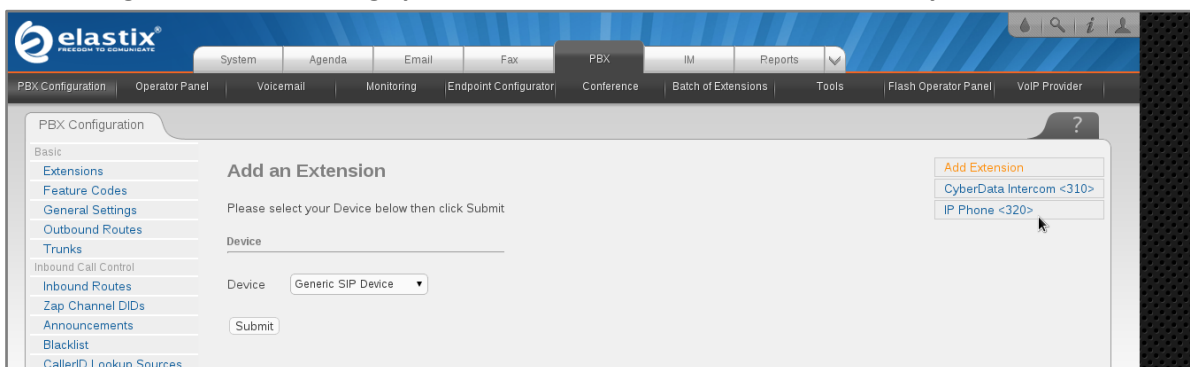
8. Click in the “Apply Configuration Changes Here” link

**Figure 4-5. Apply Configuration Changes Here**



9. With this you have just finished creating a SIP extension that will be used by the VoIP Ceiling Speaker to register with the Elastix Server. Repeat Steps 5 through 8 to similarly create another extension (different values on Step 6) to be used by the IP (SIP) Phone to register as well (extension 320 in this example). Once finished you will see something similar to Figure 4-6

**Figure 4-6. VoIP Ceiling Speaker and IP Phone extensions successfully created**



10. To register the Ceiling Speaker, you will need to enter the information from the extension created on the Elastix Server into the Ceiling Speaker by logging into the CyberData VoIP Ceiling Speaker WebUI.

Log into the CyberData VoIP Ceiling Speaker WebUI (Figure 4-7) by pointing your browser to the Ceiling Speaker’s IP address.

For the initial configuration of the Ceiling Speaker, refer to the VoIP Ceiling Speaker Operation Guide PDF which can be found at the VoIP Ceiling Speaker product page at: <http://www.cyberdata.net/products/voip/digitalanalog/ceilingspkr2/docs.html>

**Table 4-1. Factory Default Settings**

Parameter	Factory Default Setting
IP Addressing	DHCP
IP Address <sup>a</sup>	10.10.10.10
Web Access Username	admin
Web Access Password	admin
Subnet Mask <sup>a</sup>	255.0.0.0
Default Gateway <sup>a</sup>	10.0.0.1

a. Default if there is not a DHCP server present.

**Note** You may also download CyberData's VoIP Discovery Utility program which allows you to easily find and configure the default web address of the CyberData VoIP products.

CyberData's VoIP Discovery Utility program is available at the following web address:

[http://www.cyberdata.net/support/voip/discovery\\_utility.html](http://www.cyberdata.net/support/voip/discovery_utility.html)

11. When prompted, enter the following Web Access Username and Web Access Password to access the CyberData VoIP Ceiling Speaker WebUI (Figure 4-7)

**Figure 4-7. CyberData VoIP Ceiling Speaker WebUI**

CyberData Ceiling Speaker	
<b>Device Settings</b>	Device Name: <input type="text" value="CyberData Ceiling Speaker"/> Change Username: <input type="text" value="admin"/> Change Password: <input type="text"/> Re-enter Password: <input type="text"/>
<b>Current Settings</b>	Serial Number: 098004450 Mac Address: 00:20:f7:01:4f:02 Firmware Version: v6.3.0 IP Addressing: static IP Address: 192.168.1.79 Subnet Mask: 255.255.255.0 Default Gateway: 192.168.1.100 DNS Server 1: 192.168.1.100 DNS Server 2: 8.8.8.8 Speaker Volume: analog SIP Mode is: enabled Multicast Mode is: disabled Clock is: not installed Event Reporting is: disabled Nightringer is: disabled (NOT Registered with SIP Server) Primary SIP Server: (Registered with SIP Server) Backup Server 1: (NOT Registered with SIP Server)

12. Use the information from the Add SIP Extension page (Figure 4-4) to enter the following information on the SIP Config page of the VoIP Ceiling Speaker:

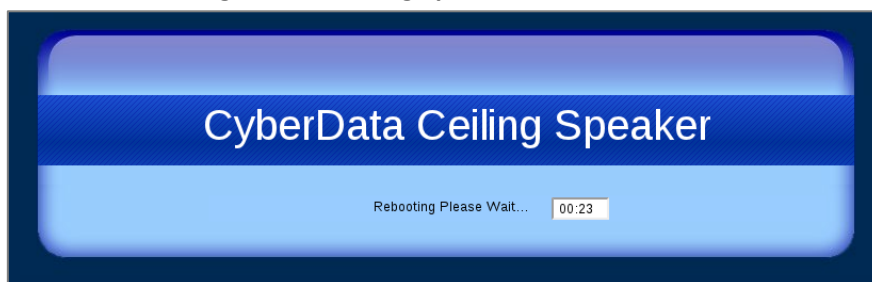
- **SIP Server** (192.168.1.65 in this example)
- **SIP User ID** (310 in this example)
- **Authenticate ID** (310 in this example)
- **Authenticate Password** (43f0j93f099y8 in this example)
- **Dial out Extension** (320 in this example)

**Note** Figure 4-8 is an example of a CyberData VoIP Ceiling Speaker that is configured to extension 310

**Figure 4-8. SIP Config Page**

13. Click on the Save button at the bottom of the screen and then on the Reboot button next to it. The screen on Figure 4-9 will be shown

**Figure 4-9. Ceiling Speaker Reboot Timer**



14. After the Ceiling Speaker finishes rebooting, the green Status LED on the Ceiling Speaker will remain lit to indicate normal operation.

---

15. To test the Ceiling Speaker's call reception feature, pick up the previously configured IP (SIP) Phone and call the Ceiling Speaker's extension number (310 in this example). When the call is established, speak into the phone and verify that you can hear your voice through the Ceiling Speaker.

This step completes the procedure.