

011270

Parts List

- (1) Networked Door Strike Intermediate Relay Module
- (1) Accessory Kit
- (2) Cable Clamps

Specifications

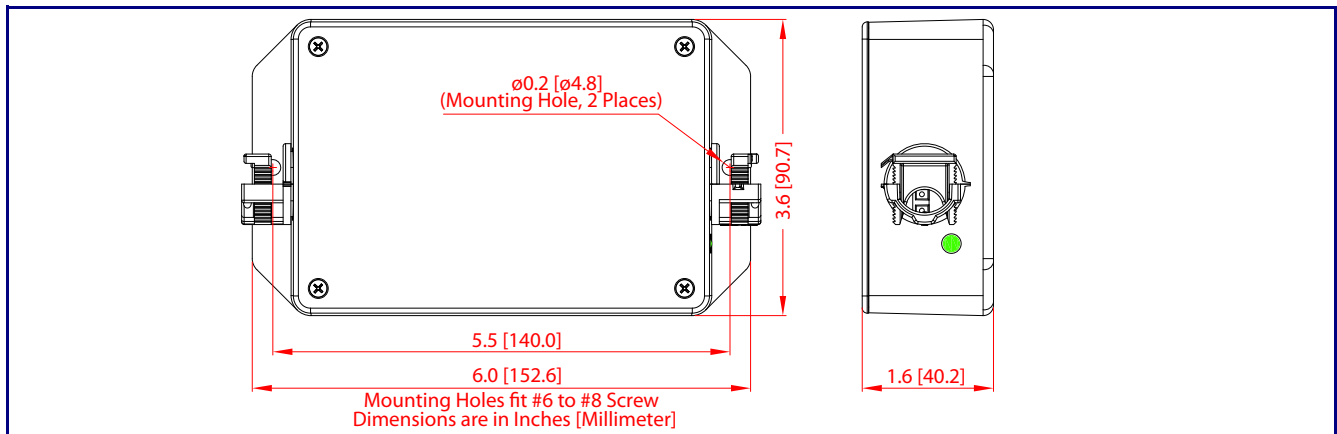
Power Input	9 to 250 VAC or 5 to 60 VDC
Operating temperature	-10° C to 50° C (14° F to 122° F)
Relay Voltage/Current	12 A @ 250 VAC / 12 A @ 24 VDC
Maximum distance from Device	50 feet



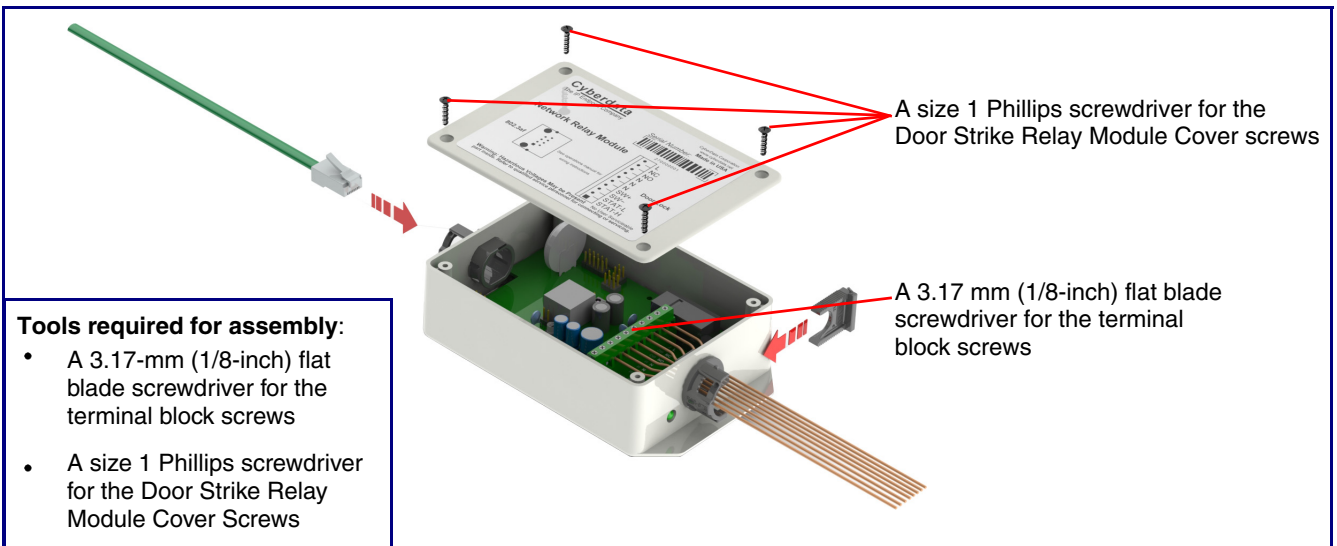
Warning

Electrical Hazard: Hazardous voltages may be present. No user serviceable part inside. Refer to qualified service personnel for connecting or servicing.

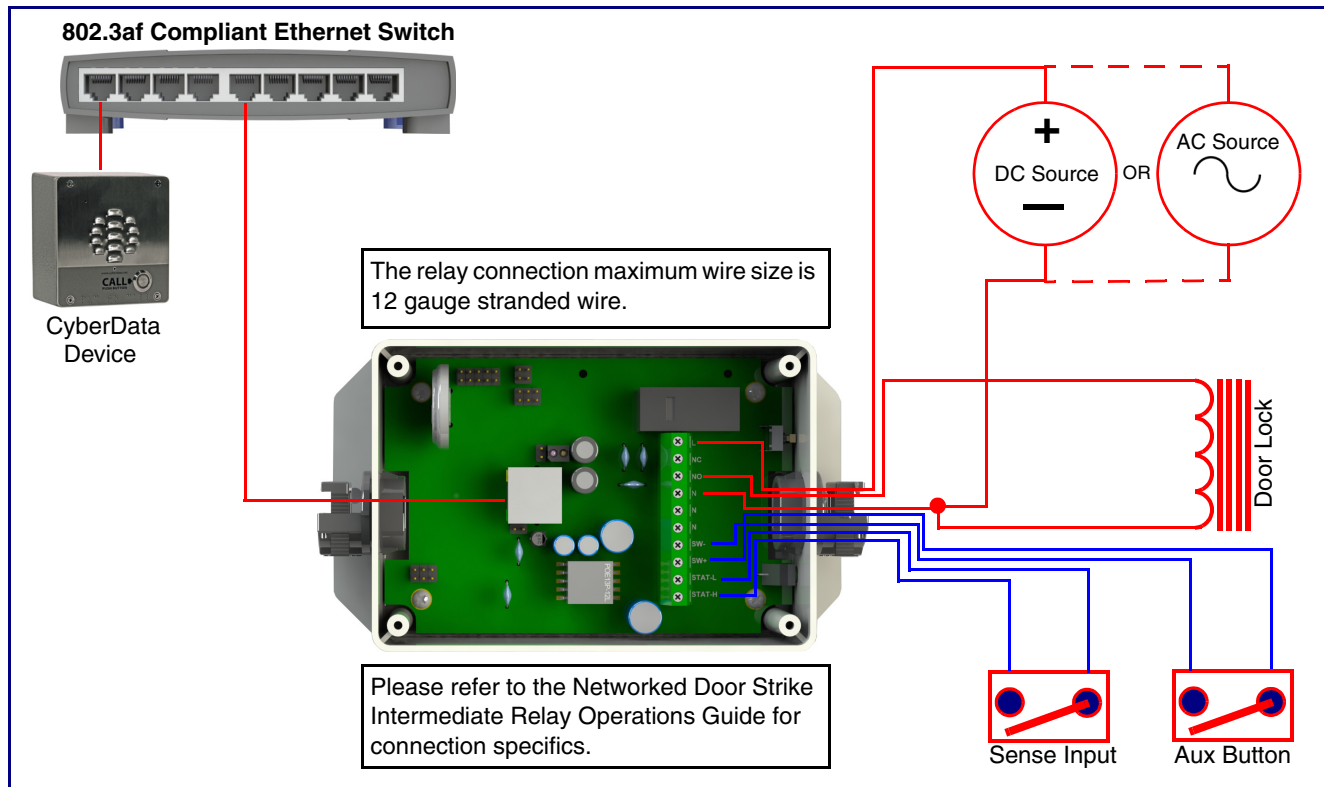
Dimensions



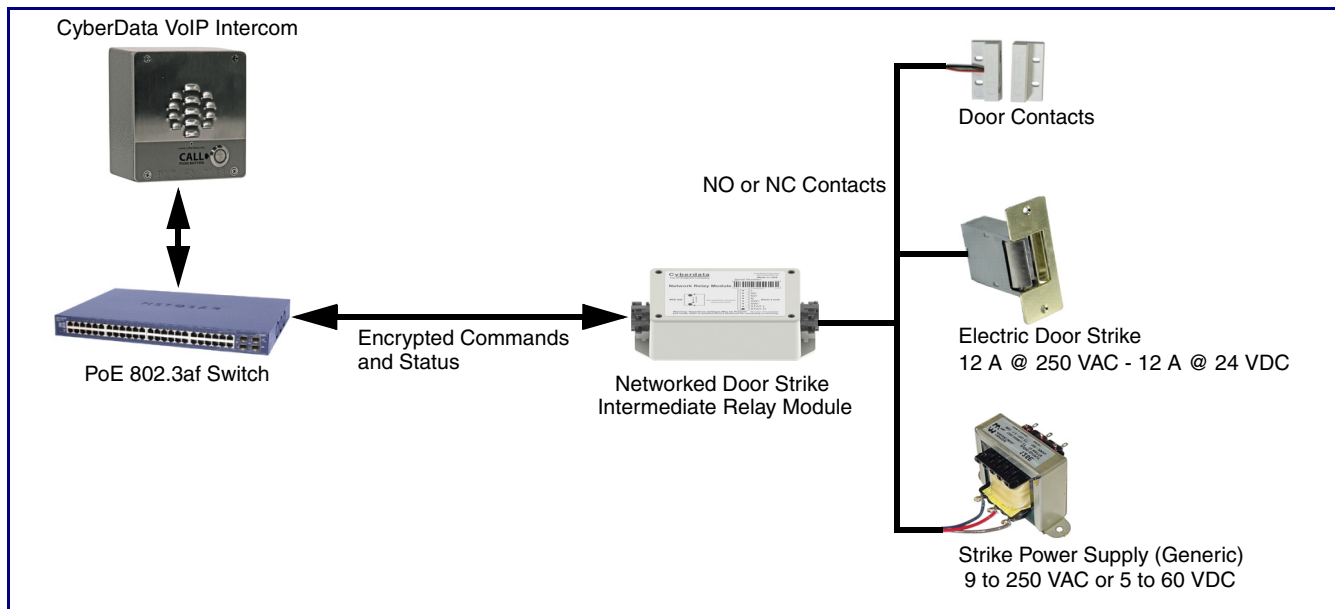
Assembly



Wiring the Networked Door Strike Intermediate Relay Module



Connection Overview



Contacting CyberData

Corporate Headquarters

CyberData Corporation
3 Justin Court
Monterey, CA 93940, USA

Phone: 831-373-2601
Fax: 831-373-4193
www.CyberData.net

Sales: (831) 373-2601 ext. 334
Support: 831-373-2601 ext. 333
Web: <http://www.cyberdata.net/support/contactsupportvoip.php>
RMA Dept: (831) 373-2601 ext. 136
Email: RMA@CyberData.net
RMA Status: <http://www.cyberdata.net/support/rmastatus.html>

Warranty information is available at:
Web: <http://www.cyberdata.net/support/warranty/index.html>