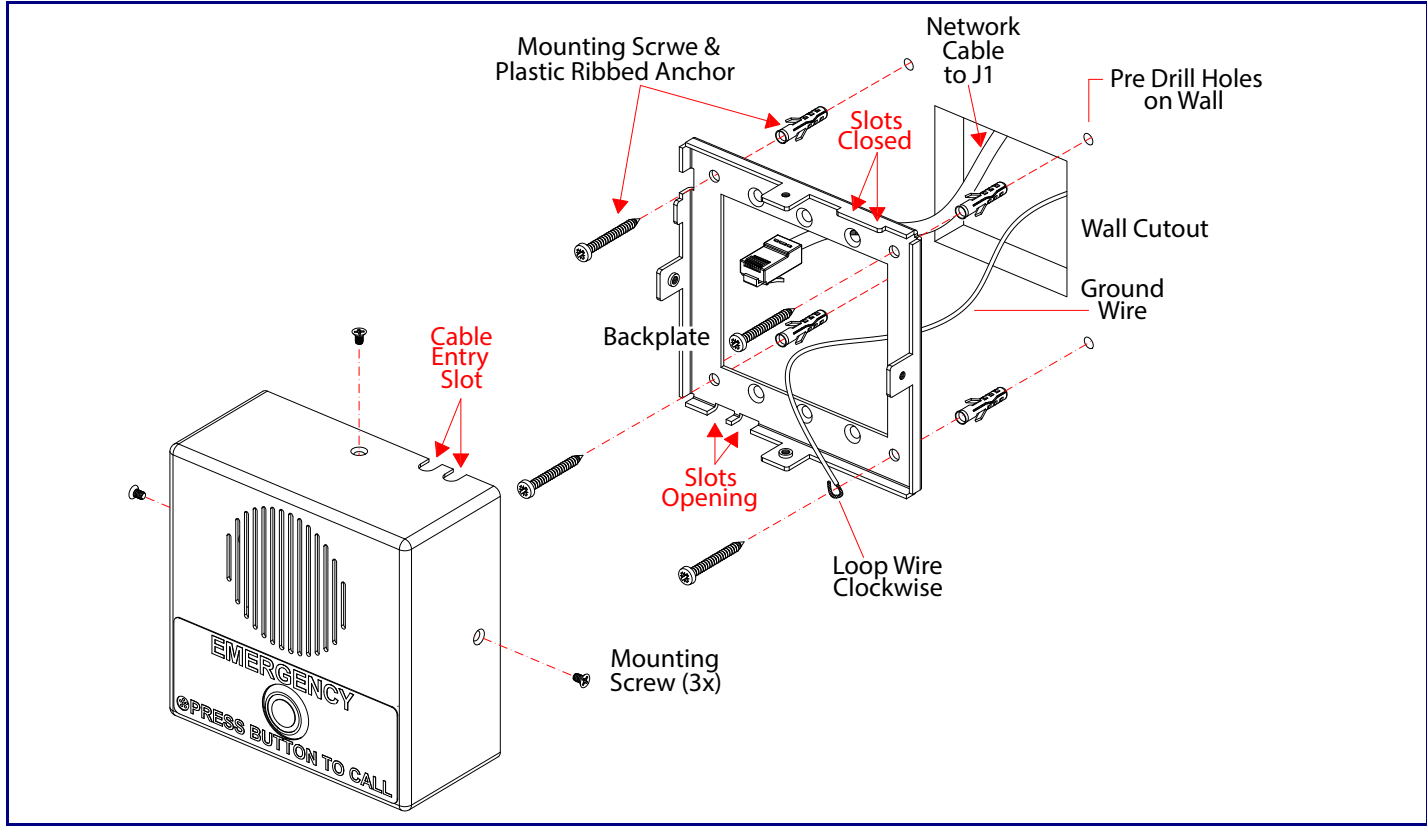
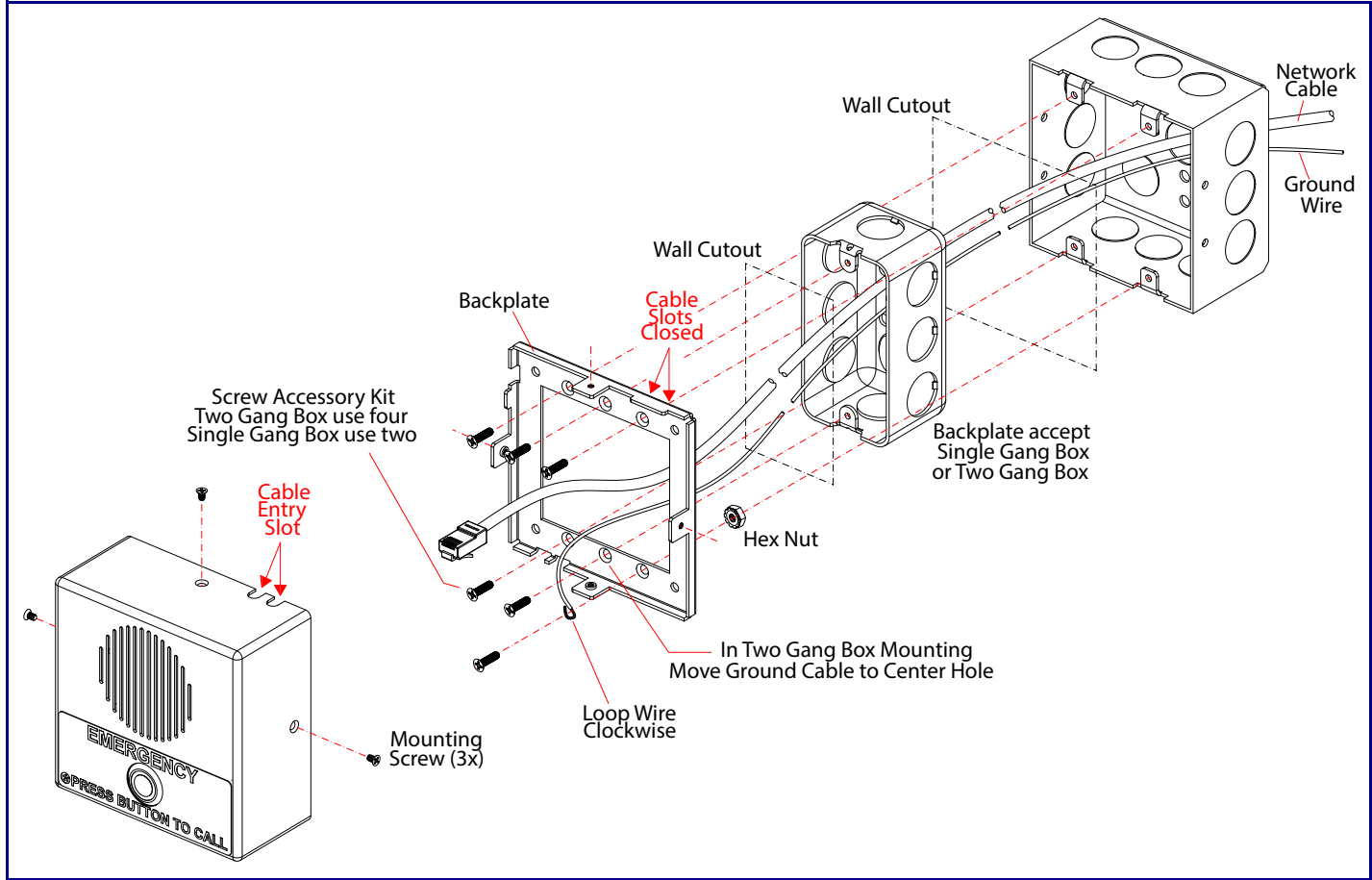


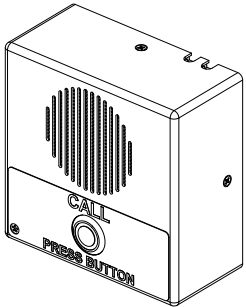
Wall Mounting Options



Gang Box Mounting Options



CyberData Installation Quick Reference
The IP Endpoint Company InformaCast Enabled Indoor Intercom
011305



Parameter	Factory Default Setting
IP Addressing	DHCP
IP Address ^a	192.168.1.23
Web Access Username	admin
Web Access Password	admin
Subnet Mask ^a	255.255.255.0
Default Gateway ^a	192.168.1.1

a. Default if there is not a DHCP server present.

Getting Started

- Download the *Operations Guide* PDF file, from the **Downloads** tab at the following webpage:
<https://www.cyberdata.net/products/011305>
- Create a plan for the locations of your Intercoms.
- WARNING:** This product should be installed by a licensed electrician according to all local electrical and building codes.
- WARNING:** To prevent injury, this apparatus must be securely attached to the floor/wall in accordance with the installation instructions.
- WARNING:** The PoE connector is intended for intra-building connections only and does not route to the outside plant.
- WARNING:** This enclosure is not rated for any AC voltages!

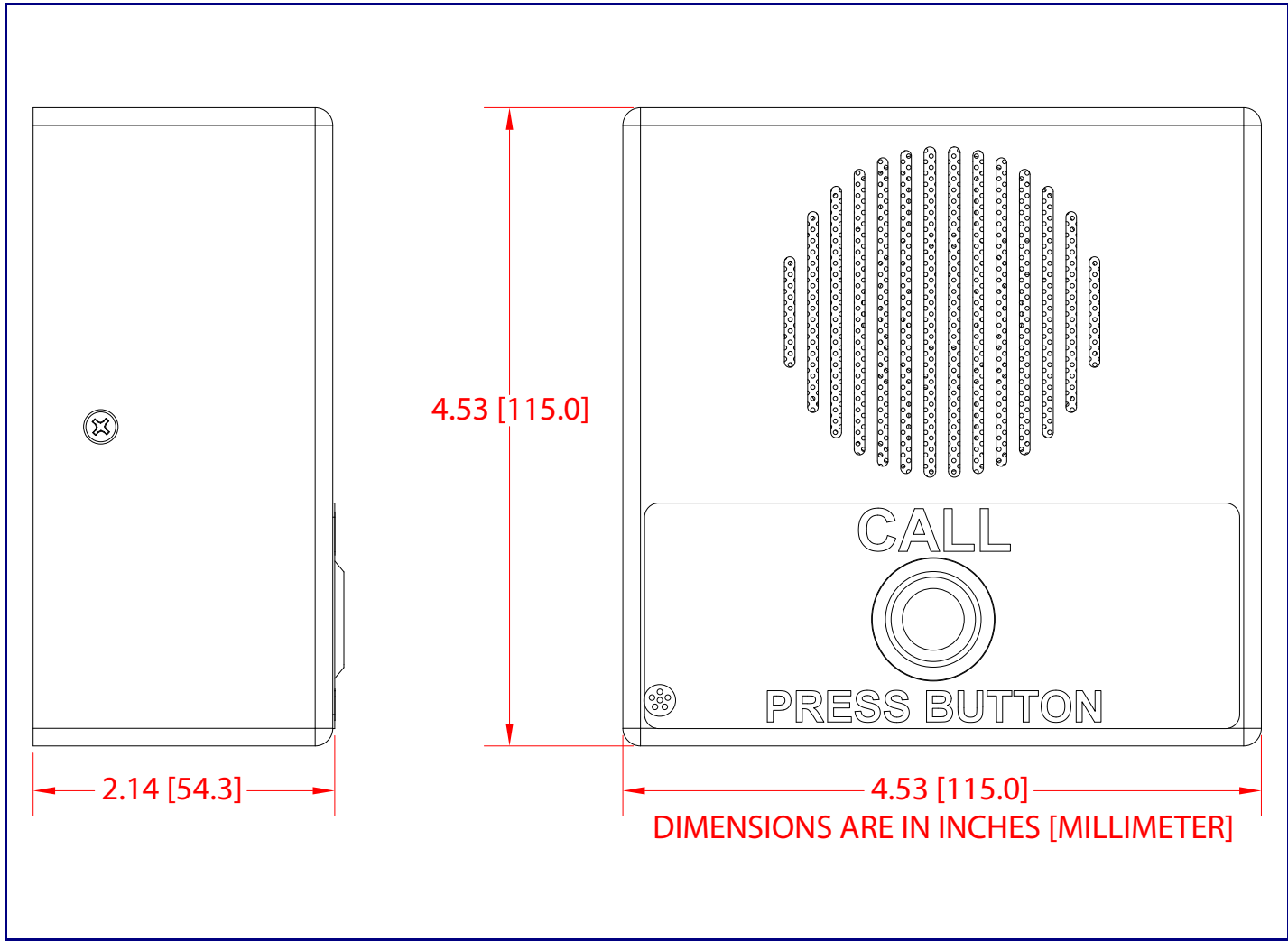
Parts

(1) Intercom Assembly	(1) Wall Mounting Kit (4) Sheet Metal Screw (4) Plastic Ribbed Anchor	(1) Gang Box Mounting Kit (4) #6-32 FlatHead Countersunk Machine Screw
-----------------------	---	---

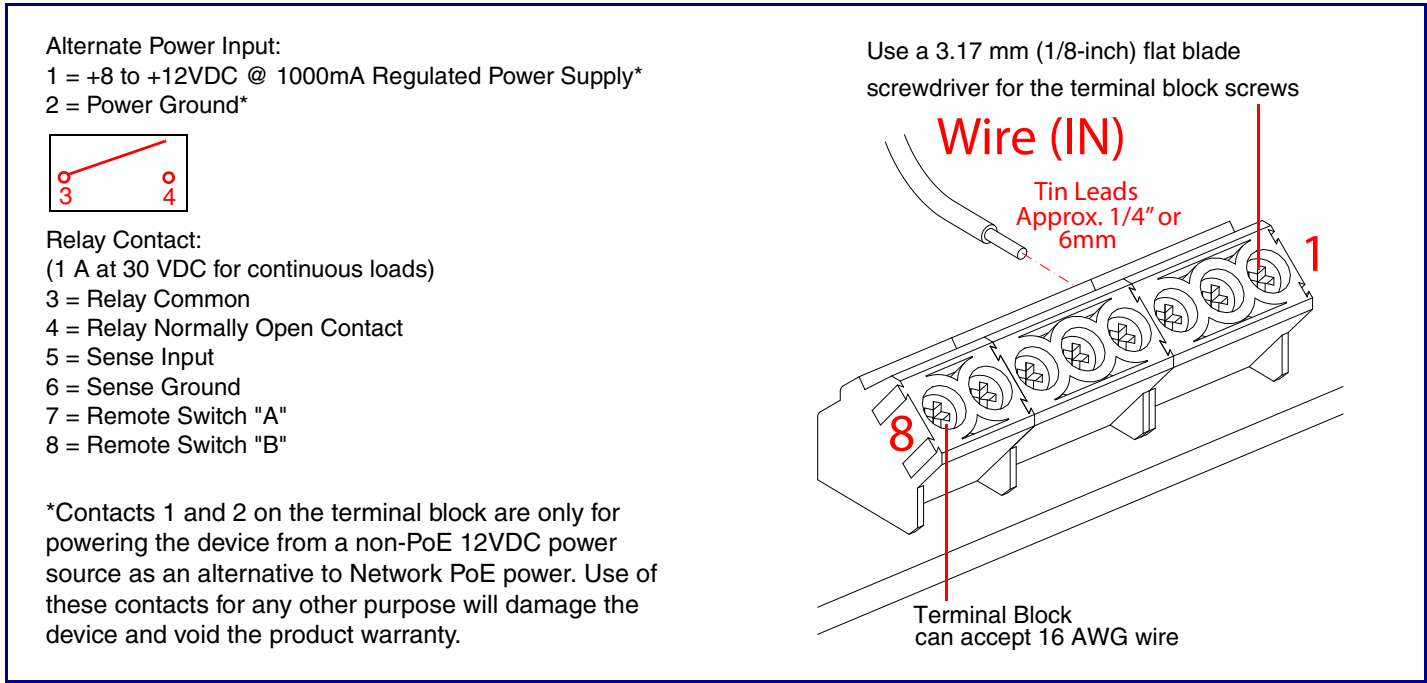
Contacting CyberData

Corporate Headquarters CyberData Corporation 3 Justin Court Monterey, CA 93940, USA Phone: 831-373-2601 Fax: 831-373-4193 https://www.cyberdata.net/	Sales: 831-373-2601 ext. 334 Support: 831-373-2601 ext. 333 Support Website: https://support.cyberdata.net/ RMA Department Contact and Status: https://support.cyberdata.net/ Warranty Information: https://support.cyberdata.net/
---	---

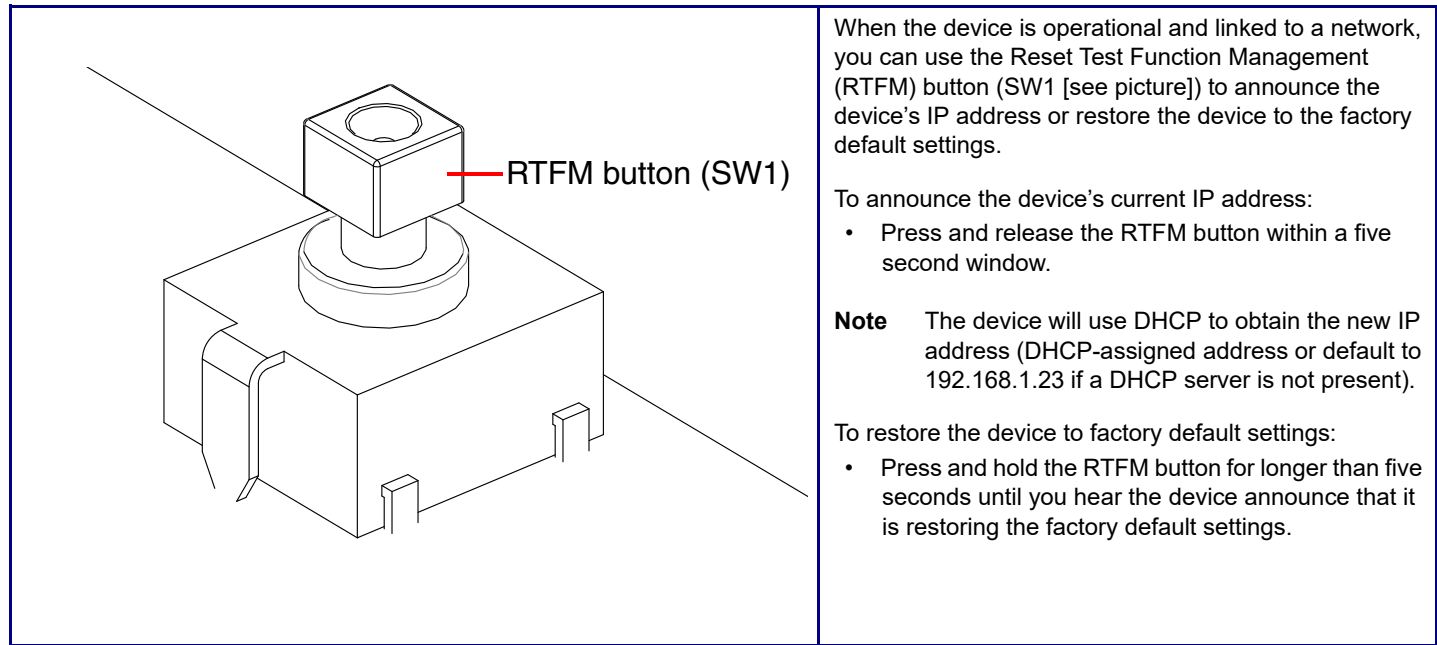
Dimensions



Terminal Block Connections



RTFM Button



Maximum Recommended Wall Cutout Dimensions

