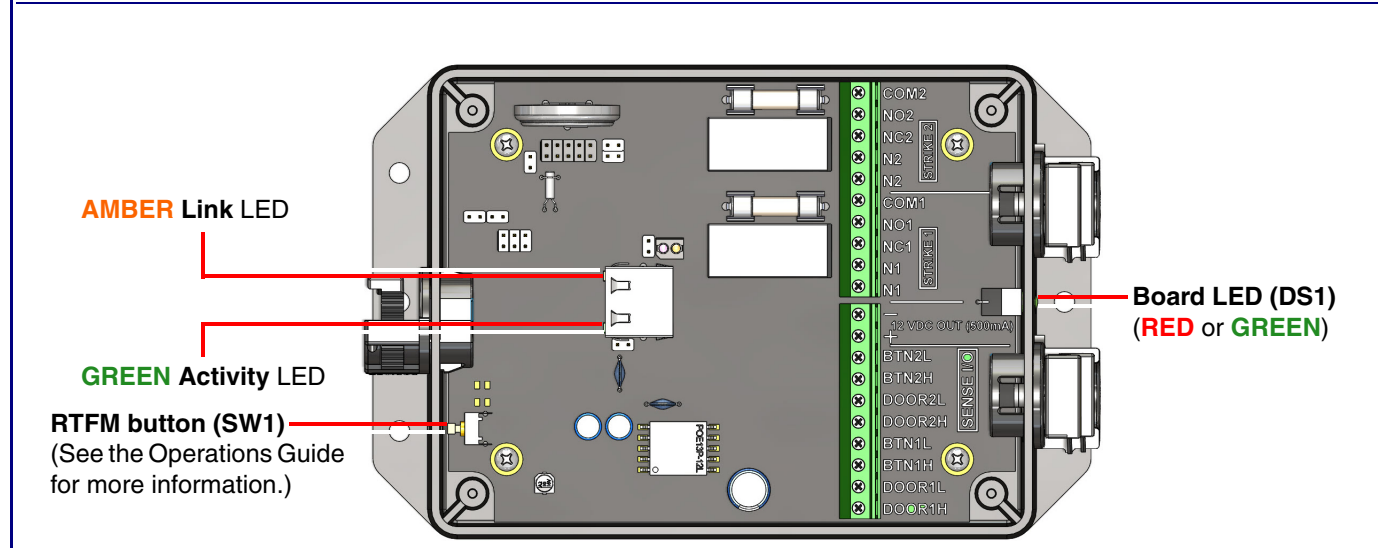


Status and Link LEDs (at J1):	
LED Behavior	Means
The AMBER Status LED is on and the GREEN Link LED is on and blinking.	No fault detected. The device is on the network and the device is not active.
Note: On boot, within approximately three seconds, the AMBER Status LED and the GREEN Link LED come on with the GREEN Link LED beginning to blink almost immediately.	
Board LED (DS1):	
LED Behavior	Means
On and solid GREEN	Neither relays nor sensors are active
Slow blinking GREEN	Either the relay or the sensor is active for Door/Device 2
Fast blinking GREEN	Either the relay or the sensor is active for Door/Device 1
On and solid RED	Either both relays, or a relay and a sensor are active: <ul style="list-style-type: none"> • Relay 1 and Relay 2 • Relay 1 and Sensor 2 • Sensor 1 and Relay 2 • Sensor 1 and Sensor 2



Contacting CyberData

<p>Corporate Headquarters</p> <p>CyberData Corporation 3 Justin Court Monterey, CA 93940, USA</p> <p>Phone: 831-373-2601 Fax: 831-373-4193 https://www.cyberdata.net/</p>		<p>Sales: 831-373-2601 ext. 334 Support: 831-373-2601 ext. 333 Support Website: https://support.cyberdata.net/ RMA Department Contact and Status: https://support.cyberdata.net/ Warranty Information: https://support.cyberdata.net/</p>
---	--	--

Installation Quick Reference
SIP Dual Relay Controller
011484



Specifications	
Ethernet I/F	10/100 Mbps
Protocol	SIP RFC 3261 Compatible
Power Input	802.3af PoE
Relay Voltage/Current	12A@250VAC 12A@24VDC
Network Security	TLS 1.2, SRTP, HTTPS
Operating Range	Temperature: -40° C to 55° C (-40° F to 131° F) Humidity: 5-95%, non-condensing
Storage Temperature	-40° C to 70° C (-40° F to 158° F)
Storage Altitude	Up to 15,000 ft. (4573 m)

 GENERAL ALERT	<p>Warning</p> <p><i>Electrical Hazard:</i> Hazardous voltages may be present. No user serviceable part inside. Refer to qualified service personnel for connecting or servicing.</p>
-------------------	--

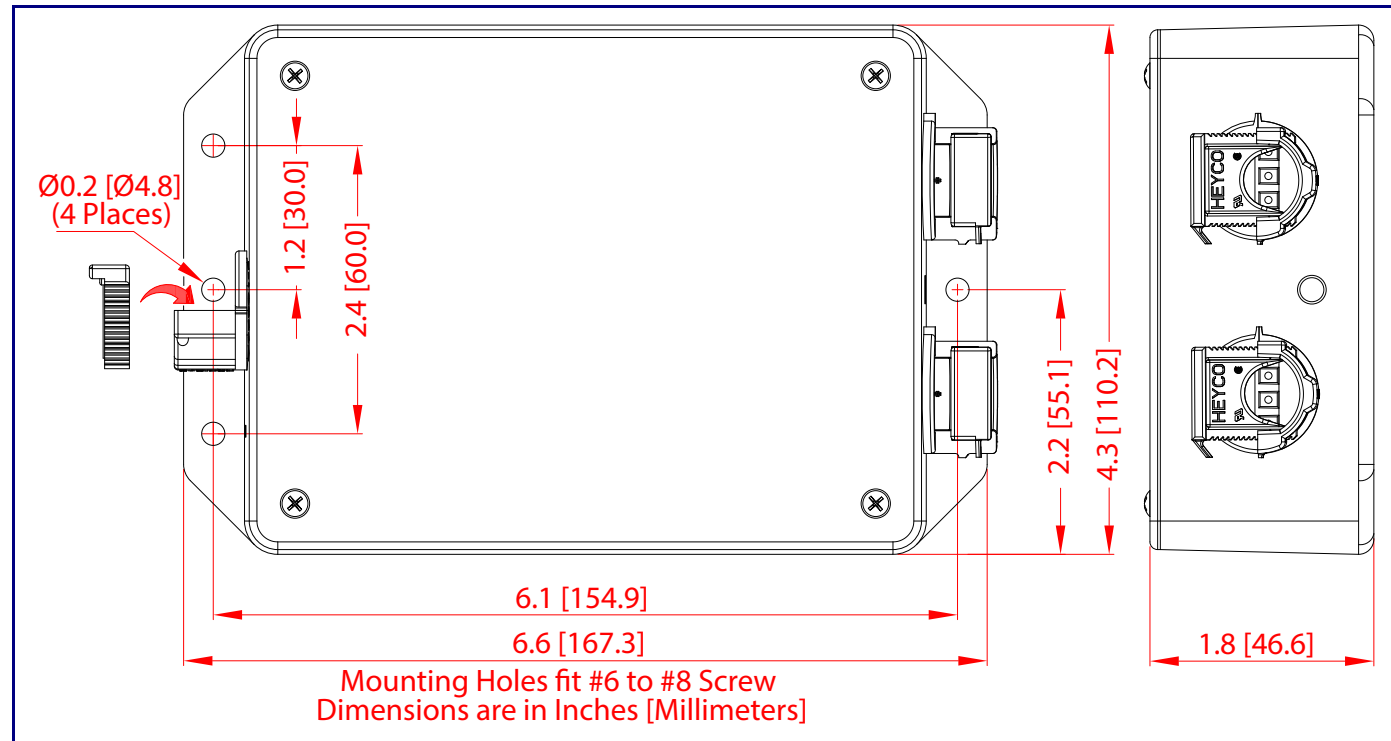
Getting Started

- Download the *Operations Guide* PDF file, from the **Downloads** tab at: <https://www.cyberdata.net/products/011484/>
- **WARNING:** This product should be installed by a licensed electrician according to all local electrical and building codes.
- **WARNING:** To prevent injury, this apparatus must be securely attached to the floor/wall in accordance with the installation instructions.
- **WARNING:** The PoE connector is intended for intra-building connections only and does not route to the outside plant.
- **WARNING:** This enclosure is not rated for any AC voltages!

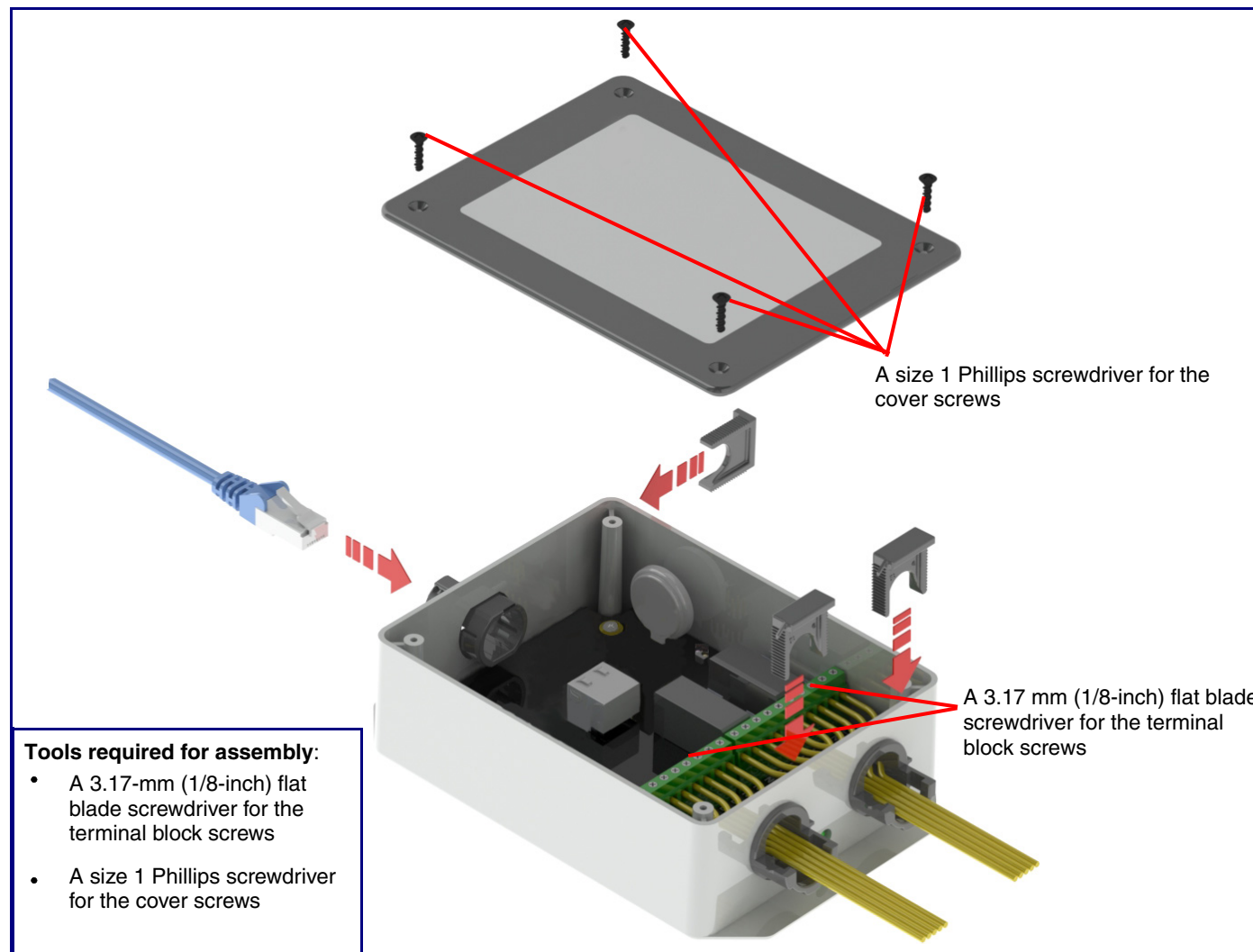
Parts

<p>(1) SIP Dual Relay Controller</p>	<p>(3) Pan Head Sheet Metal Screw</p>	<p>(3) Plastic Ribbed Anchor</p>	<p>(4) Enclosure Screw</p>
--------------------------------------	---------------------------------------	----------------------------------	----------------------------

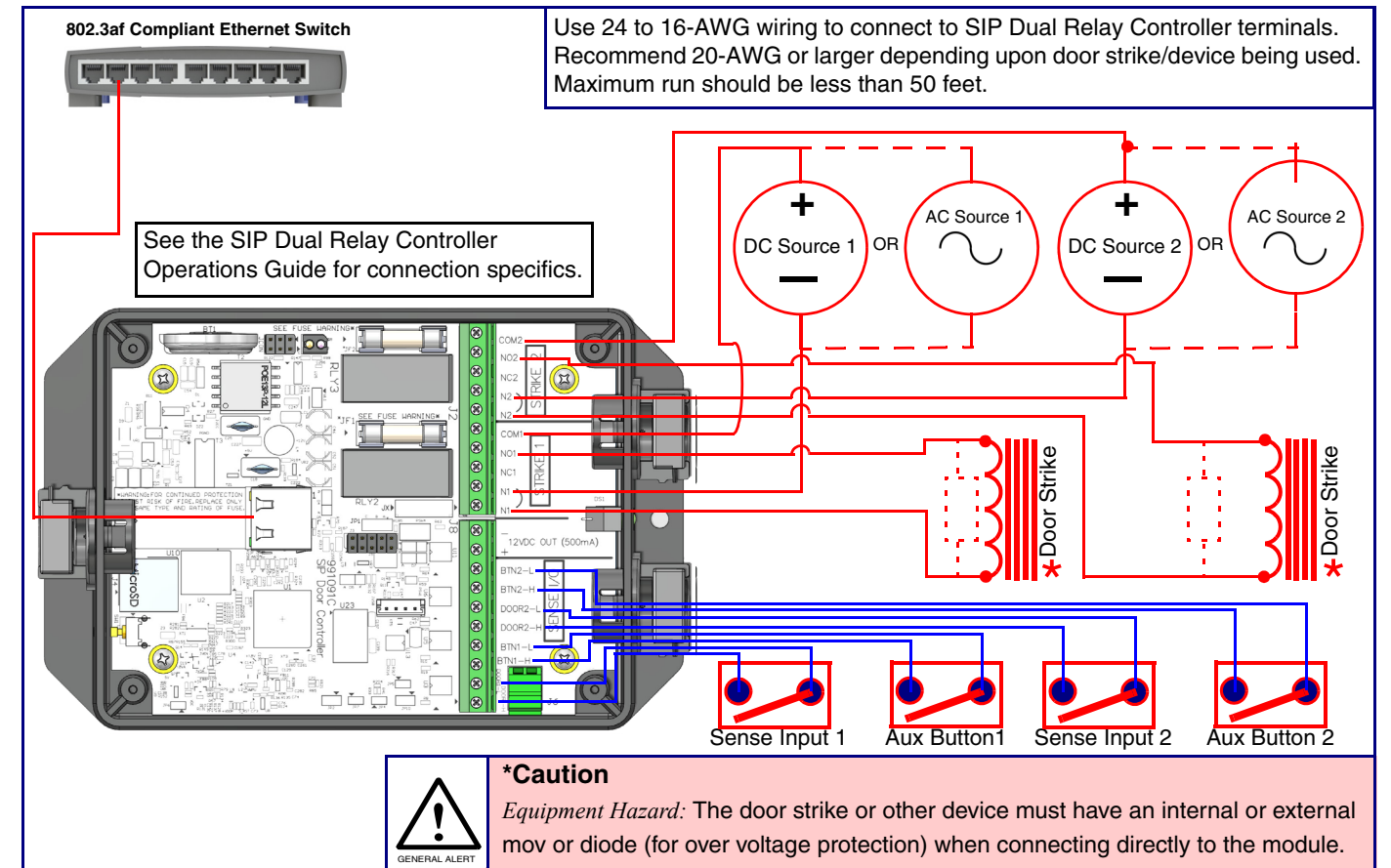
Dimensions



Assembly



SIP Dual Relay Controller Wiring Diagram with External Power Source



Example Diagram Using PoE Power and One SIP Dual Relay Controller with the 011508 Remote Call Button

