



Wildix Configuration Guide: SIP Speakers

Document Part # 931893A

CyberData Corporation
3 Justin Court
Monterey, CA 93940
(831) 373-2601

Wildix Configuration Guide: SIP Speaker Document #931893A

COPYRIGHT NOTICE:

© 2021, CyberData Corporation, ALL RIGHTS RESERVED.

This configuration guide and related materials are the copyrighted property of CyberData Corporation. No part of this configuration guide or related materials may be reproduced or transmitted, in any form or by any means (except for internal use by licensed customers), without prior express written permission of CyberData Corporation. This configuration guide, and the products, software, firmware, and/or hardware described in this configuration guide are the property of CyberData Corporation, provided under the terms of an agreement between CyberData Corporation and recipient of this configuration guide, and their use is subject to that agreement and its terms.

DISCLAIMER: Except as expressly and specifically stated in a written agreement executed by CyberData Corporation, CyberData Corporation makes no representation or warranty, express or implied, including any warranty or merchantability or fitness for any purpose, with respect to this configuration guide or the products, software, firmware, and/or hardware described herein, and CyberData Corporation assumes no liability for damages or claims resulting from any use of this configuration guide or such products, software, firmware, and/or hardware. CyberData Corporation reserves the right to make changes, without notice, to this configuration guide and to any such product, software, firmware, and/or hardware.

OPEN SOURCE STATEMENT: Certain software components included in CyberData products are subject to the GNU General Public License (GPL) and Lesser GNU General Public License (LGPL) “open source” or “free software” licenses. Some of this Open Source Software may be owned by third parties. Open Source Software is not subject to the terms and conditions of the CyberData COPYRIGHT NOTICE or software licenses. Your right to copy, modify, and distribute any Open Source Software is determined by the terms of the GPL, LGPL, or third party, according to who licenses that software. Software or firmware developed by CyberData that is unrelated to Open Source Software is copyrighted by CyberData, subject to the terms of CyberData licenses, and may not be copied, modified, reverse-engineered, or otherwise altered without explicit written permission from CyberData Corporation.

TRADEMARK NOTICE: CyberData Corporation and the CyberData Corporation logos are trademarks of CyberData Corporation. Other product names, trademarks, and service marks may be the trademarks or registered trademarks of their respective owners.

Revision Information

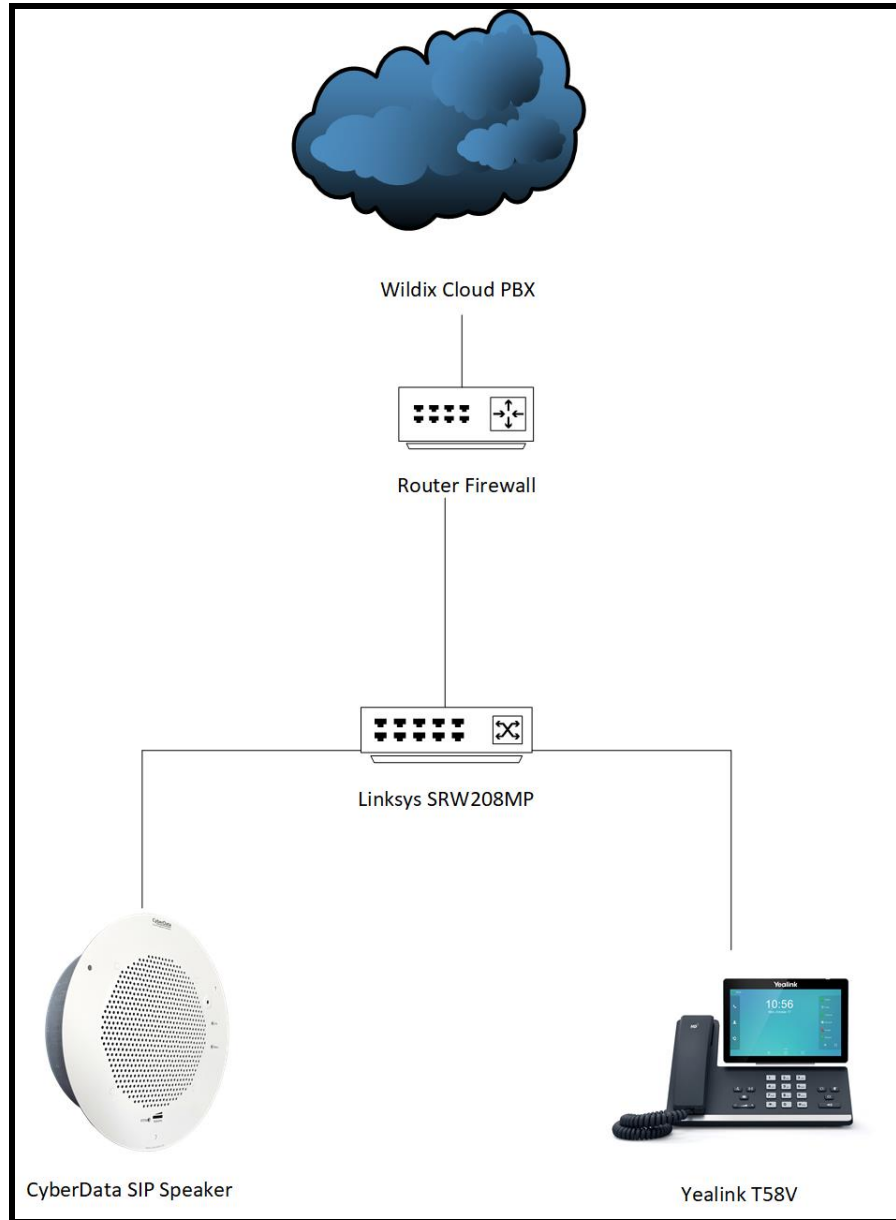
- 10/7/2021 – Initial Release

Table of Contents

Table of Contents	3
1.0 Setup Diagram.....	4
2.0 Test Setup Equipment.....	5
3.0 Before You Start	6
4.0 Configuration Procedure: Extension Creation.....	7
5.0 Configuration Procedure: Setting up the Paging Extension	12
6.0 Configuration Procedure: Setting up the Nightringer Extension	15
7.0 Contact CyberData Corporation.....	18

1.0 Setup Diagram

Figure 1-1: Interoperability Test Infrastructure



2.0 Test Setup Equipment

This section describes the products used for interoperability testing with Wildix.

Table 2-1: Setup Equipment

EQUIPMENT	MODEL or PART NUMBER	FIRMWARE VERSION
CYBERDATA SIP SPEAKER	011394	12.1.0
CYBERDATA SIP TALKBACK SPEAKER	011398	12.1.0
YEALINK	T58A	58.83.3.6
LINKSYS SWITCH	SRW208MP	---

3.0 Before You Start

This configuration guide documents the integration process of a CyberData SIP Speaker.

Network Advisories

Wildix uses a Fully Qualified Domain Name (FQDN) for the SIP server address. The CyberData SIP Speaker needs to perform a DNS A query to resolve the IP address of Wildix's SIP Server FQDN. It is necessary to ensure the configured DNS server(s) have an A record for the SIP Server address.

In addition, be sure to verify the following ports are available for the button to use:

- UDP 5060 (SIP)
- UDP 10500 (RTP)

The speaker will need to traverse the public internet in order to operate with Wildix in the cloud.

The speaker's paging extension uses SIP port 5060 to receive SIP messages. The paging extension will send SIP messages to port 5060, the port used by Wildix's SIP Server.

SIP ports 5060 and RTP port 10500 are the default values on all noted firmware levels.

Alternatively, SIP ports for the paging extension are configurable on the **SIP** page of the web interface.

The CyberData Discovery Utility can be used to locate CyberData devices on your network. You may download it from the following web address:

<https://www.cyberdata.net/pages/discovery>

Note: DHCP addressing mode is enabled on default on all noted firmware levels.

Product Documentation and Utilities

Before you start, download the Operation and Quick Start guides from the button's product webpage:

CyberData SIP Speaker ([011394](#))

https://files.cyberdata.net/assets/011393,011394/011394_931181L_SIP_Speaker_Ops_Guide.pdf

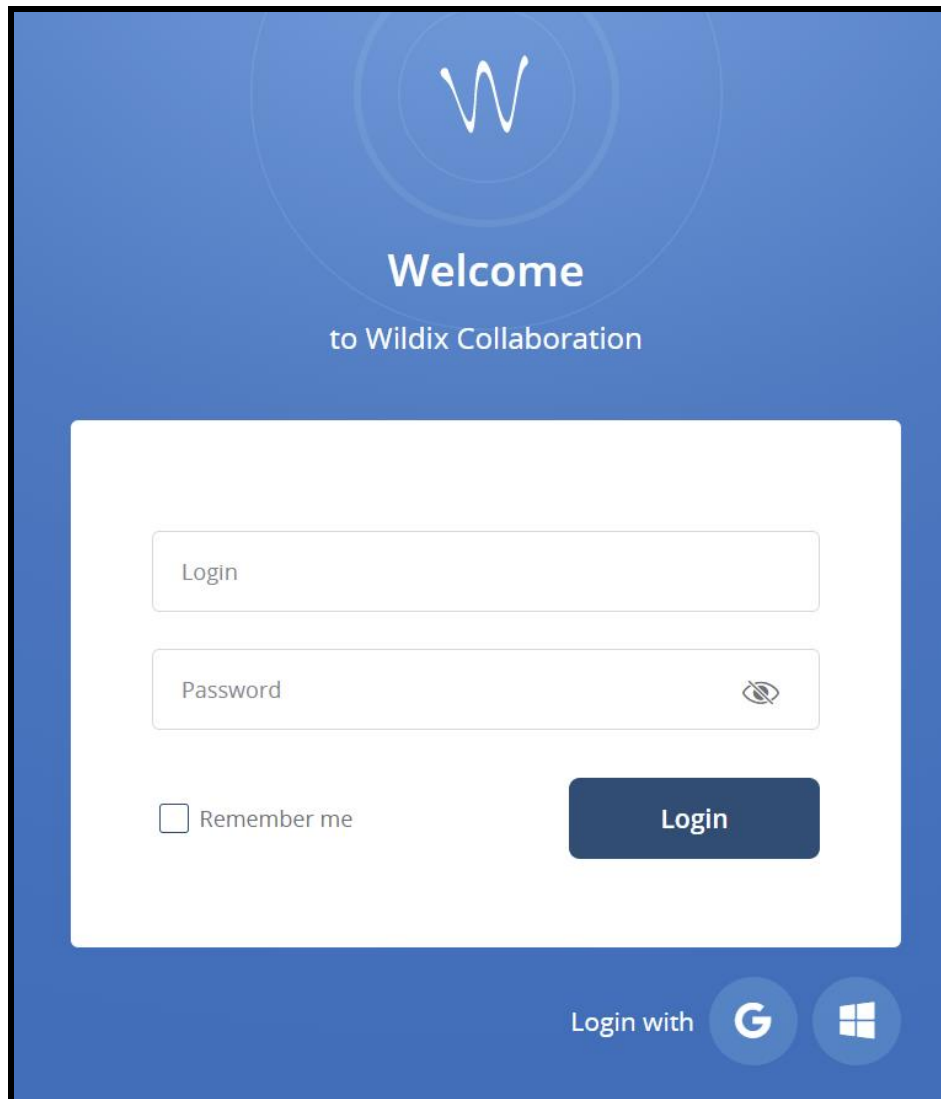
CyberData SIP Talkback Speaker ([011398](#))

https://files.cyberdata.net/assets/011397,011398/011398_931191M_SIP_Talk-Back_Speaker_Operations_Guide.pdf

4.0 Configuration Procedure: Extension Creation

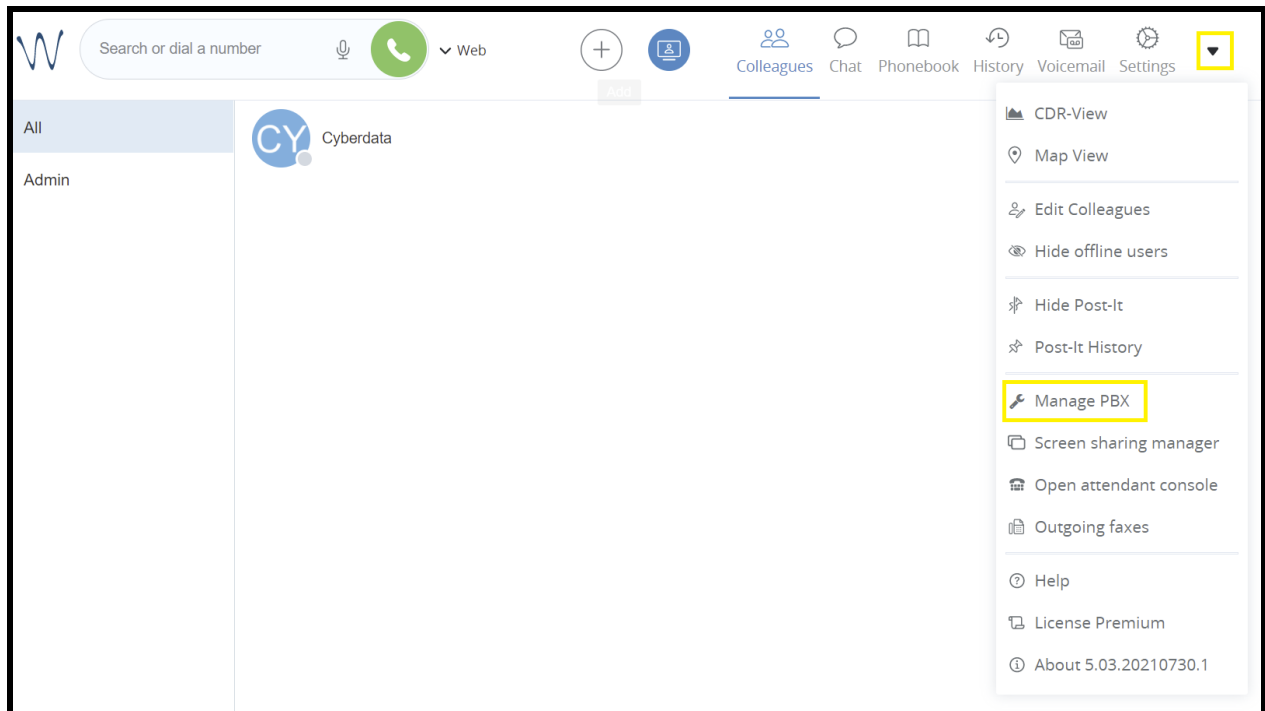
1. Log into Wildix.

Figure 4-1: Log into Wildix



- From the landing page select the **Other** down arrow button and pick **Manage PBX..**

Figure 4-2: Manage PBX page



3. On the **Manage PBX** page press the + button to add a new extension. .

Figure 4-3: Manage PBX

	Full Name	Login	Extension	Fax	Office	Email	Mobile	Dialplan	Fax dial...	Group	Department	License type
admin	admin	admin						internalc...	internalc...	Admin		
Rob			201		+1614552123			users	users	New		Premium
Todd			202		+1614552122			users	users	Old		Premium
ZD Paul			203		+16144841530			users	users	Admin		Premium
Cyberdata			300					users	users	Admin		Premium
Yealink Phone			204					users	users	Default		Essential
CyberData Nightringer			301					users	users	Default		Essential

Below the table, there is a row of buttons: a highlighted '+' button, 'Edit', a '-' button, 'Set passwords', 'Edit preferences', and 'Send Welcome Message'.

4. A pop-up to create the extension will appear.

Figure 4-4: Extension creation

Add [Close]

User [v]

Full Name []

Login []

Extension []

Fax []

Office []

Email []

Mobile []

Dialplan users (Internal dialplan) [v]

Fax dialplan users (Internal dialplan) [v]

Language En-us [v]

Group Default [v]

Department []

License type Essential [v]

[Ok] [Cancel]

5. Make sure the drop-down menu has **User** selected.
6. Set the full name to the location of the speaker.
7. Set the **Extension Number** desired for the device.

Note: Other values can be set, but for the purposes of this guide all other fields are left blank.

Figure 4-5: Filled Extension Popup

The screenshot shows a window titled "Edit" with a close button (X) in the top right corner. The window contains the following fields and values:

- Dropdown menu: User
- Full Name: Cyberdata SIP Speaker
- Login: (empty)
- Extension: 300
- Fax: (empty)
- Office: (empty)
- Email: (empty)
- Mobile: (empty)
- Dialplan: users (Internal dialplan)
- Fax dialplan: users (Internal dialplan)
- Language: En-us
- Group: Admin
- Department: (empty)
- License type: Premium

Buttons: Ok, Cancel

8. Press **Ok** to save the extension.
9. After creating the extension, select it out of the list.

Figure 4-6: Extension Created

	Full Name	Login	Extension	Fax	Office	Email	Mobile	Dialplan	Fax dial...	Group	Department	License type
admin	admin	admin						internalc...	internalc...	Admin		
Rob			201		+16145552123			users	users	New		Premium
Todd			202		+16145552122			users	users	Old		Premium
ZD Paul			203		+16144841530			users	users	Admin		Premium
Cyberdata SIP Speaker			300					users	users	Admin		Premium
Yealink Phone			204					users	users	Default		Essential
CyberData Nightringer			301					users	users	Default		Essential

10. After selecting the extension, press **Set Passwords**.
11. Click on the **Generate** button to create a password.

Figure 4-7: Set Passwords Popup

12. Click the show button and copy the auto-generated password which will be required in the next section.

5.0 Configuration Procedure: Setting up the Paging Extension

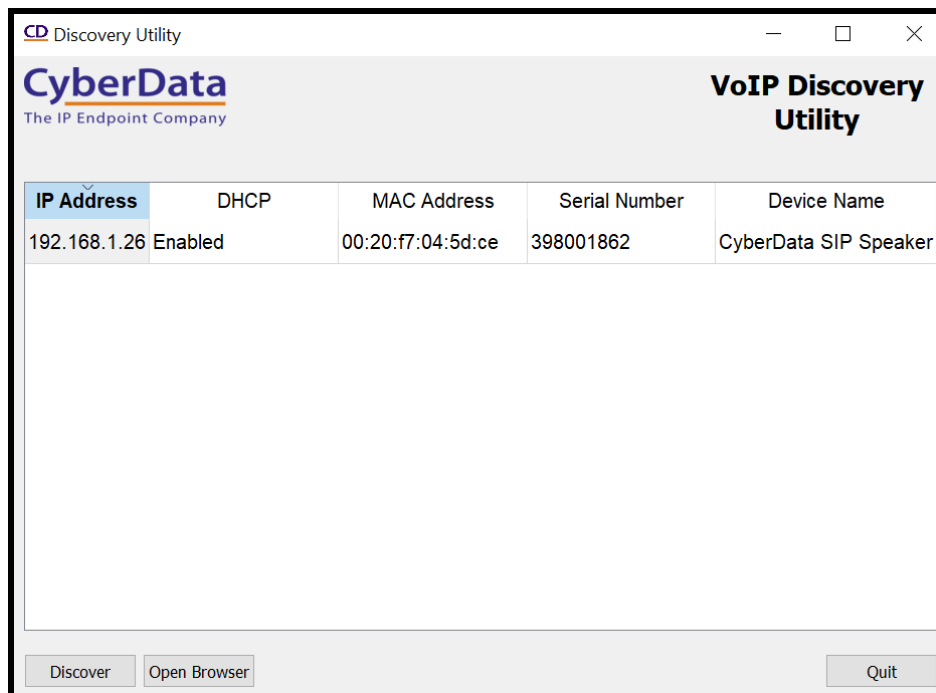
If you are configuring through the web interface, use the following steps to login to the web interface of your CyberData device.

Table 5-1: Setting Name correlation

CyberData Setting	Wildix Provisioning Pop-up
Primary SIP Server	SIP Domain
Primary SIP User ID	Extension Number
Primary SIP Auth ID	Extension Number
Primary SIP Auth Password	Password

1. Click **Launch Browser** from the CyberData Discovery Utility or point your browser to the CyberData device’s IP address to access the Home Page of the web interface.

Figure 5-1: CyberData Discovery Utility



2. Enter the default credentials when prompted and click the **Log In** button.

Username: admin

Password: admin

Figure 5-2: Home Tab



3. Navigate to the SIP Tab.

Figure 5-3: SIP Tab

SIP Settings

Enable SIP operation:

SIP Transport Protocol:

TLS Version:

Verify Server Certificate:

Register with a SIP Server:

Use Cisco SRST:

Primary SIP Server:

Primary SIP User ID:

Primary SIP Auth ID:

Primary SIP Auth Password:

Backup SIP Server 1:

Backup SIP User ID 1:

Backup SIP Auth ID 1:

Backup SIP Auth Password 1:

Backup SIP Server 2:

Backup SIP User ID 2:

Backup SIP Auth ID 2:

Backup SIP Auth Password 2:

Remote SIP Port:

Local SIP Port:

Outbound Proxy:

Outbound Proxy Port:

Monitor User ID:

Monitor Authenticate ID:

Monitor Authenticate Password:

Disable rport Discovery:

Buffer SIP Calls:

Re-registration Interval (in seconds):

Unregister on Boot:

Keep Alive Period:

Nightringer Settings

Enable Nightringer:

SIP Server:

Remote SIP Port:

Local SIP Port:

Outbound Proxy:

Outbound Proxy Port:

User ID:

Authenticate ID:

Authenticate Password:

Re-registration Interval (in seconds):

RTP Settings

RTP Port (even):

Jitter Buffer:

SRTP:

Call Disconnection

Terminate Call after delay:

Codec Selection

Force Selected Codec:

Codec:

Button Settings

Dial Out Extension:

Extension ID:

Save Reboot Toggle Help

4. Set the **Primary SIP Server** to the FQDN of the Wildix Server.
5. Set the **Primary SIP User ID** to the extension number.
6. Set the **Primary SIP Auth ID** to the extension number.
7. Set the **Primary SIP Auth Password** to the auto-generated password from the previous section.
8. Set the **Keep Alive Period** to 0.
9. Save.
10. Reboot.

Once the unit reboots it should be registered with Wildix.

6.0 Configuration Procedure: Setting up the Nightringer Extension

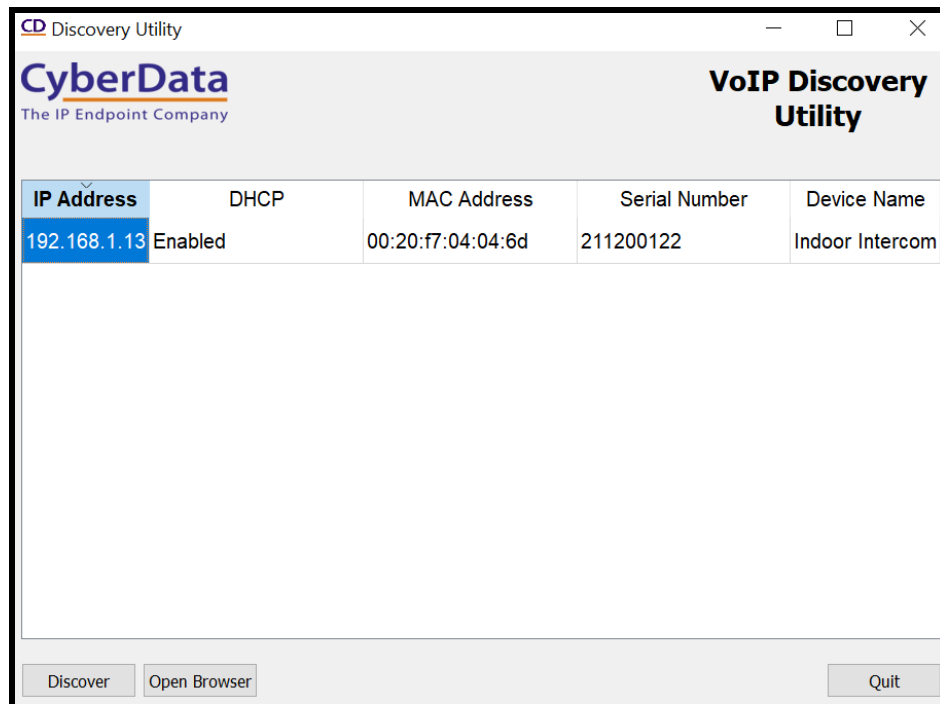
If you are configuring through the web interface, use the following steps to login to the web interface of your CyberData device.

Table 6-1: Setting Name correlation

CyberData Setting	Wildix Provisioning Pop-up
Primary SIP Server	SIP Domain
Primary SIP User ID	Extension Number
Primary SIP Auth ID	Extension Number
Primary SIP Auth Password	Password

1. Click **Launch Browser** from the CyberData Discovery Utility or point your browser to the CyberData device’s IP address to access the Home Page of the web interface.

Figure 6-1: CyberData Discovery Utility



2. Enter the default credentials when prompted and click the **Log In** button.

Username: admin

Password: admin

Figure 6-2: Home Tab



3. Navigate to the SIP Tab.

Figure 6-4: SIP Tab

The screenshot displays a configuration interface for SIP settings, divided into several sections:

- SIP Settings:** Includes checkboxes for 'Enable SIP operation' (checked), 'Verify Server Certificate' (unchecked), 'Register with a SIP Server' (checked), and 'Use Cisco SRST' (unchecked). It features input fields for 'Primary SIP Server' (wildixstudent9.wildix.com), 'Primary SIP User ID' (300), 'Primary SIP Auth ID' (300), and 'Primary SIP Auth Password' (masked). There are also fields for backup servers and ports (Remote SIP Port: 5060, Local SIP Port: 5061, Outbound Proxy Port: 0). Other options include 'Monitor User ID', 'Disable rport Discovery', 'Buffer SIP Calls', 'Re-registration Interval (in seconds): 360', 'Unregister on Boot', and 'Keep Alive Period: 0'.
- Nighthringer Settings:** Includes 'Enable Nighthringer' (checked), 'SIP Server' (wildixstudent9.wildix.com), 'Remote SIP Port' (5060), 'Local SIP Port' (5061), 'Outbound Proxy', 'Outbound Proxy Port' (0), 'User ID' (301), 'Authenticate ID' (301), 'Authenticate Password' (masked), and 'Re-registration Interval (in seconds): 360'.
- RTP Settings:** Includes 'RTP Port (even): 10500', 'Jitter Buffer: 50', and 'SRTP: Disabled'.
- Call Disconnection:** Includes 'Terminate Call after delay: 0'.
- Codec Selection:** Includes 'Force Selected Codec' (unchecked) and 'Codec: PCMU (G.711, u-law)'.
- Button Settings:** Includes 'Dial Out Extension: 204' and 'Extension ID: id204'.

At the bottom of the interface are buttons for 'Save', 'Reboot', and 'Toggle Help'.

4. Set the **SIP Server** to the FQDN of the Wildix Server.
5. Set the **SIP User ID** to the extension number.
6. Set the **SIP Auth ID** to the extension number.
7. Set the **SIP Auth Password** to the auto-generated password from the previous section.
8. Set the **Keep Alive Period** to 0.
9. Save.
10. Reboot.

Once the unit reboots it should be registered with Wildix.

7.0 Contact CyberData Corporation

Sales

For sales-related questions, please visit our [Contact CyberData Sales](#) web page for more information.

Technical Support

For CyberData Technical Support, please submit a [Contact CyberData VoIP Technical Support](#) form on our website.

The CyberData VoIP Technical Support Contact form initiates a troubleshooting ticket which CyberData uses for quality assurance purposes.

Additionally, the Contact VoIP Tech Support form tells us which phone system you are using, the make and model of the network switch, and other essential troubleshooting information we need to efficiently assist with a resolution. Please also include as much detail as possible in the Describe Problem section of the form. Your installation is extremely important to us.

Documentation Feedback

We realize changes to the software or hardware of the Wildix PBX solution may render this document obsolete. We welcome and encourage documentation feedback to ensure continued applicability.