

Leap Telecom Configuration Guide: Loudspeakers

Document Part # 931955A

CyberData Corporation
3 Justin Court
Monterey, CA 93940
(831) 373-2601

Leap Telecom Configuration Guide: Loudspeakers
Document #931955A

COPYRIGHT NOTICE:

© 2022, CyberData Corporation, ALL RIGHTS RESERVED.

This configuration guide and related materials are the copyrighted property of CyberData Corporation. No part of this configuration guide or related materials may be reproduced or transmitted, in any form or by any means (except for internal use by licensed customers), without prior express written permission of CyberData Corporation. This configuration guide, and the products, software, firmware, and/or hardware described in this configuration guide are the property of CyberData Corporation, provided under the terms of an agreement between CyberData Corporation and recipient of this configuration guide, and their use is subject to that agreement and its terms.

DISCLAIMER: Except as expressly and specifically stated in a written agreement executed by CyberData Corporation, CyberData Corporation makes no representation or warranty, express or implied, including any warranty or merchantability or fitness for any purpose, with respect to this configuration guide or the products, software, firmware, and/or hardware described herein, and CyberData Corporation assumes no liability for damages or claims resulting from any use of this configuration guide or such products, software, firmware, and/or hardware. CyberData Corporation reserves the right to make changes, without notice, to this configuration guide and to any such product, software, firmware, and/or hardware.

OPEN SOURCE STATEMENT: Certain software components included in CyberData products are subject to the GNU General Public License (GPL) and Lesser GNU General Public License (LGPL) “open source” or “free software” licenses. Some of this Open Source Software may be owned by third parties. Open Source Software is not subject to the terms and conditions of the CyberData COPYRIGHT NOTICE or software licenses. Your right to copy, modify, and distribute any Open Source Software is determined by the terms of the GPL, LGPL, or third party, according to who licenses that software. Software or firmware developed by CyberData that is unrelated to Open Source Software is copyrighted by CyberData, subject to the terms of CyberData licenses, and may not be copied, modified, reverse-engineered, or otherwise altered without explicit written permission from CyberData Corporation.

TRADEMARK NOTICE: CyberData Corporation and the CyberData Corporation logos are trademarks of CyberData Corporation. Other product names, trademarks, and service marks may be the trademarks or registered trademarks of their respective owners.

Revision Information

8/26/2022 – Initial Release

Table of Contents

Revision Information	2
Table of Contents	3
1.0 Supported CyberData Products	4
2.0 Before You Start	5
3.0 Setting up a Device in the Leap Tel System	6
4.0 Setting up the CyberData Loudspeaker	10
5.0 Using a CyberData Loudspeaker in a Leap Telecom system.	13
5.1 Setting up a Multicast priority	13
6.0 Setup Diagram.....	14
7.0 Contact CyberData Corporation.....	15

1.0 Supported CyberData Products

This section describes the products used for interoperability testing with Leap Telecom.

Table 1-1: Supported CyberData Products

EQUIPMENT	MODEL or PART NUMBER	FIRMWARE VERSION
SIP IP66 INDOOR/OUTDOOR HORN	011457	12.2.0 or later
SIP LOUDSPEAKER AMPLIFIER (AC-POWERED)	011404	12.1.0 or later
SIP LOUDSPEAKER AMPLIFIER	011405	12.1.0 or later
SIP PAGING AMPLIFIER	011324	12.1.0 or later

2.0 Before You Start

Network Advisories

Leap Telecom Calling uses a Fully Qualified Domain Name (FQDN) for the SIP server. The CyberData loudspeaker needs to perform a DNS query to resolve the IP address of the Leap Telecom SIP Server's FQDN.

In addition, be sure to verify the following ports are available for the device to use:

- UDP 5060 (SIP)
- TCP 5060, 5061 (SIP)
- UDP 10500 (RTP)

The loudspeaker will need to traverse the public internet in order to operate with Leap Telecom in the cloud. The device's paging and nightringer extension uses SIP port 5060 to send and receive SIP messages.

SIP ports 5060 and RTP port 10500 are the default values on all noted firmware levels. Alternatively, SIP ports are configurable on the **SIP** page of the web interface. The RTP port setting on the **SIP** page is used for both extensions.

Product Documentation and Utilities

Before you start, download the Operation and Quick Start guides from the speaker's product webpage:

SIP IP66 Indoor/Outdoor Horn (011457)

<https://www.cyberdata.net/collections/sip/products/011457>

SIP Loudspeaker Amplifier (AC-Powered) (011404)

<https://www.cyberdata.net/collections/sip/products/011404>

SIP Loudspeaker Amplifier (PoE) (011405)

<https://www.cyberdata.net/collections/sip/products/011405>

SIP Paging Amplifier (011324)

<https://www.cyberdata.net/collections/sip/products/011324>

The CyberData Discovery Utility can be used to locate CyberData devices on your network. You may download it from the following web address:

<https://www.cyberdata.net/pages/discovery>

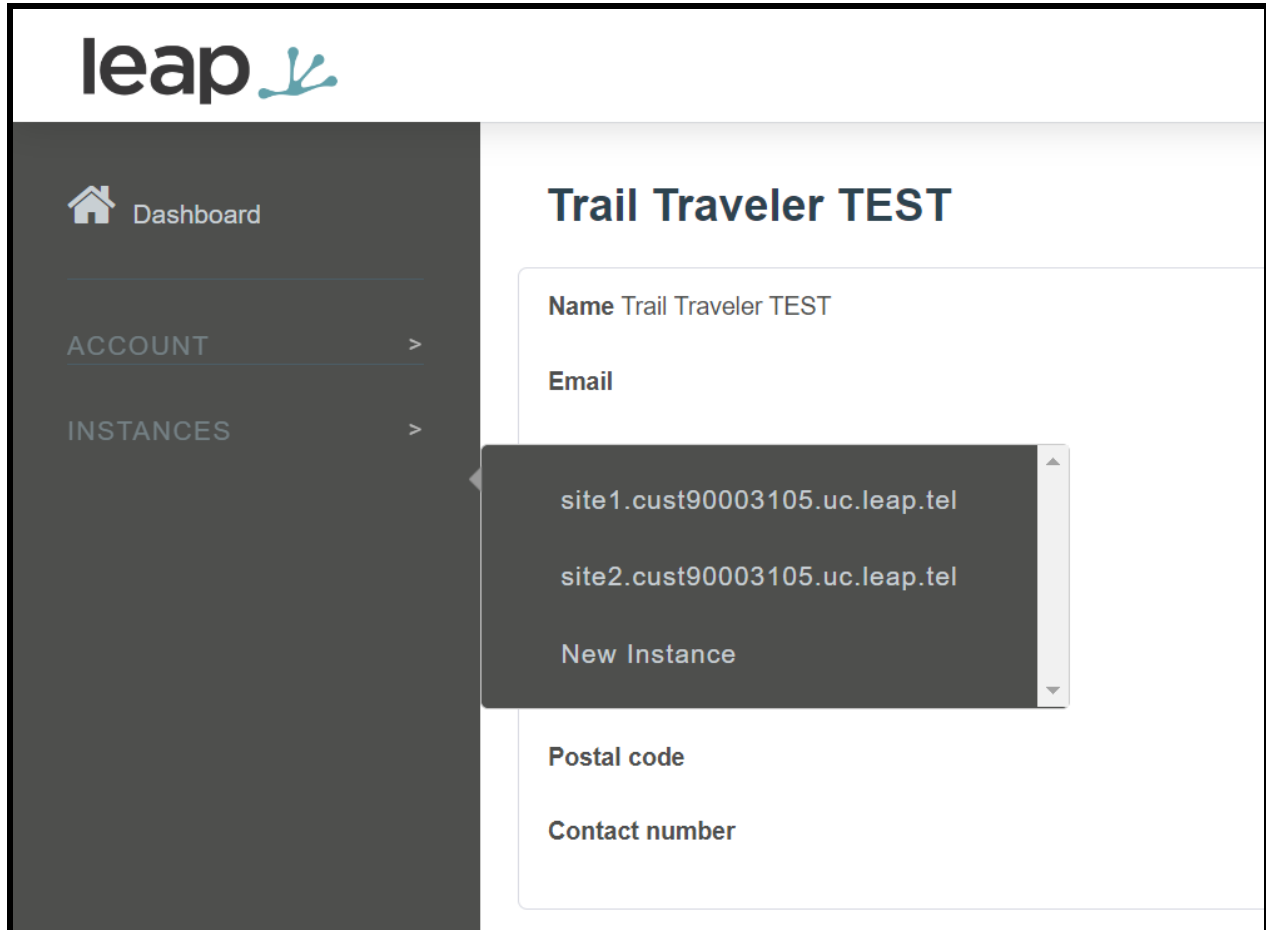
Note: DHCP addressing mode is enabled on default on all noted firmware levels.

3.0 Setting up a Device in the Leap Tel System

This section outlines how to create a device in the Leap Tel system.

1. Login to the Leap system
2. Mouse over instances and select the site/instance where the device will be used.

Figure 3-1: Instance Selection



- From the site page select **Devices**, then press the + button to create a new device.

Figure 3-2: Workspaces Page

Devices 8 -

Search:

Name	Login	SIP Caller ID name	SIP Caller ID number	Edit	Delete	Origins	Registration Status	Routing
Ted Home Phone	tedxxx	Traveler Traveler						
Home Speaker	cyb3r	Traveler Traveler						
Test device	fubar	Traveler Traveler						
Cyber Intercom	Intercom	Traveler Traveler						
CyberNight	CyberNight	Traveler Traveler						
CallButton	CallButton	Traveler Traveler						
PaulSoftphone	PaulSoftphone	Traveler Traveler						
KERRY'S DESK PHONE	kgarrison123	Traveler Traveler						

Show 1 - 8 of 8 < < > >

- Set the **Name** of the device, being descriptive can help for device management in the future.
- Set the **Login** field as desired, CyberData recommends not using spaces, hyphens, or underscores.
- Press **Save** at the bottom of the page.

Figure 3-3: Add a Device

New device

Name ⓘ

Login ⓘ

Password ⓘ REGENERATE PASSWORD

GmxNcaCX47kz7orYWzk2

7. After pressing save the page will refresh, click on **Extensions**.
8. In the **Extensions** section press the + to create a new extension.

Figure 3-4: Pick a device

Extensions 9 -

Search:

Name	Number	Edit	Delete	Origins	Routing
CyberData Ring Group	3004				
Kerry Home Speaker	4001				
Cyber Intercom	3006				
CyberNight	3008				
CallButton	3010				
PaulSoftphone	3011				
Sales Conference Room Ext	4002				
Kerry	1002				
Ted	2005				

Show 1 - 9 of 9 < < > >

+

9. In the New extension window set a **Name** for the extension. CyberData recommends having the name correlate to the device that will use the extension.
10. Set the **Number** as desired.
11. Set the **Destination** to the **Name** of the device set in step 4.
12. Press **Save**.

Figure 3-5: New Extension Creation

The screenshot shows a 'New extension' configuration window. It features three input fields: 'Name' (containing 'Paging Amplifier'), 'Number' (containing '3012'), and 'Destination' (a dropdown menu showing 'CyberData Paging Amp (device:3445)'). Below the fields are two buttons: 'CANCEL' and 'SAVE'.

Configuration on the Leap Tel side is now complete and the CyberData device is ready to be configured. Values set on the Device tab are required for registration, CyberData recommends opening up the Device created in steps 3 - 6 for ease of copy and pasting.

4.0 Setting up the CyberData Loudspeaker

This section outlines the required sections for the CyberData device and how the credentials supplied from Leap correlate to the CyberData settings. For the purposes of the document the loudspeaker is used to illustrate how to setup the device. There is no difference in configuration for the SIP Paging Amplifier, SIP Loudspeaker Amplifier, or the SIP IP66 Indoor/Outdoor Horn.

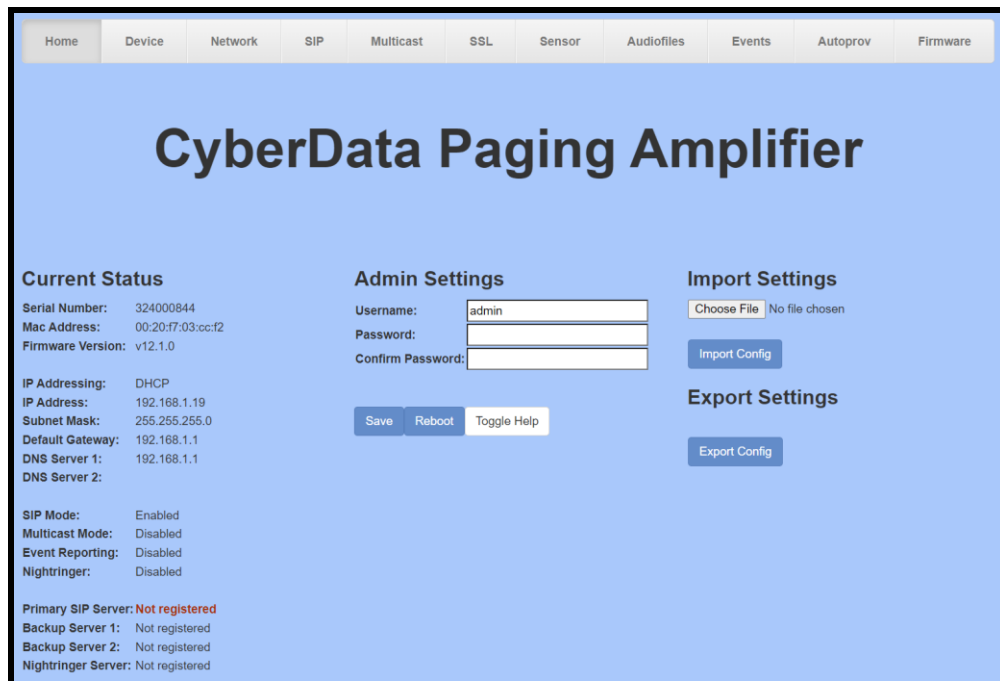
Table 4-1: SIP Credential Explanation

Leap Credential	CyberData Setting
Instance	Primary SIP Server
Device Login	Primary SIP User ID
Device Login	Primary SIP Auth ID
Device Password	Primary SIP Auth Password

*CyberData's default login credentials are:
Username: admin
Password: admin*

1. Log into the web interface of the CyberData device.

Figure 4-1: Home Tab



2. Navigate to the SIP tab.
3. Set the **Primary SIP Server** field to the FQDN of the Instance.
4. Set the **Primary SIP User ID** to the Device Login set in step 3-5.
5. Set the **Primary SIP Auth ID** to the Device Login set in step 3-5.
6. Set the **Primary SIP Auth Password** to the Device Password.

Note: Leap Tel supports both UDP and TCP for SIP Transport. Please use either of the transport protocols, during testing CyberData found that TCP preforms best.

7. Save and Reboot.

Figure 4-2: SIP Tab

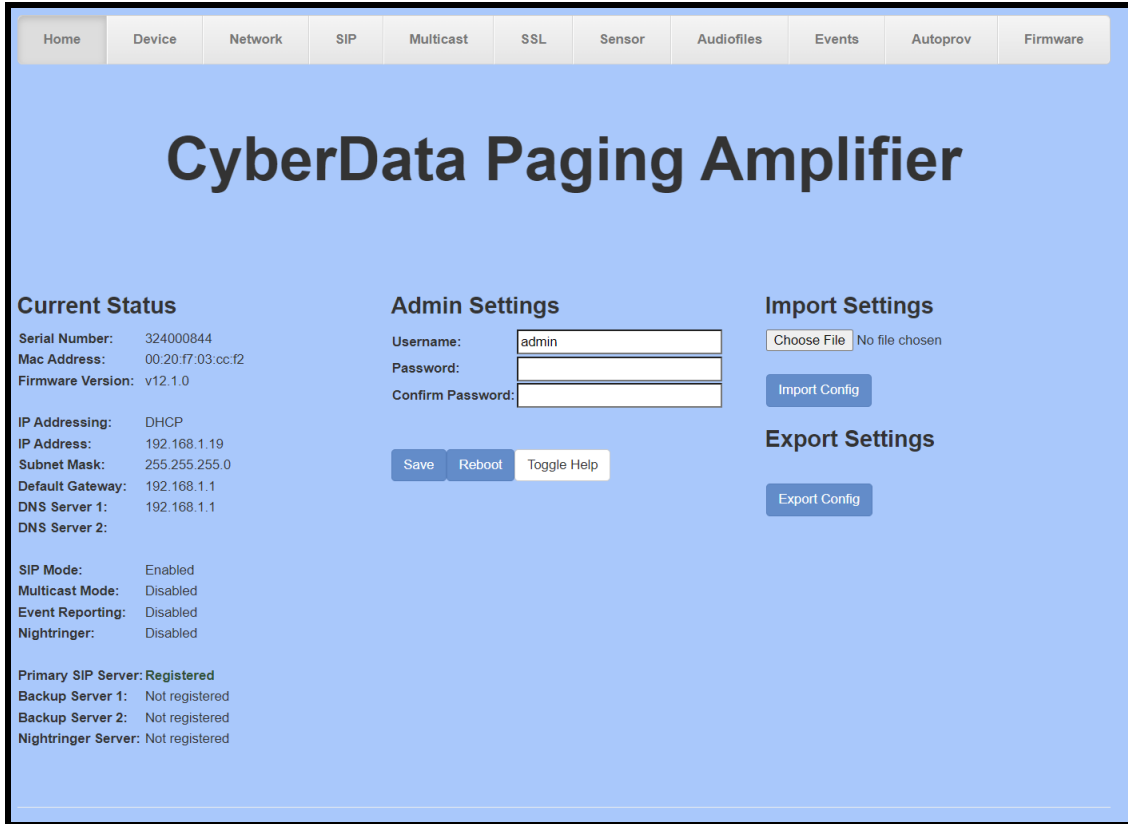
The screenshot shows the SIP configuration interface with the following settings:

- SIP Settings:**
 - Enable SIP operation:
 - SIP Transport Protocol: UDP
 - TLS Version: 1.2 only (recommended)
 - Verify Server Certificate:
 - Register with a SIP Server:
 - Use Cisco SRST:
 - Primary SIP Server: site1.cust90003105.uc.leap.tel
 - Primary SIP User ID: Paging_Amp
 - Primary SIP Auth ID: Paging_Amp
 - Primary SIP Auth Password: [masked]
 - Backup SIP Server 1: [empty]
 - Backup SIP User ID 1: [empty]
 - Backup SIP Auth ID 1: [empty]
 - Backup SIP Auth Password 1: [empty]
 - Backup SIP Server 2: [empty]
 - Backup SIP User ID 2: [empty]
 - Backup SIP Auth ID 2: [empty]
 - Backup SIP Auth Password 2: [empty]
 - Remote SIP Port: 5060
 - Local SIP Port: 5060
 - Outbound Proxy: [empty]
 - Outbound Proxy Port: 0
 - Disable rport Discovery:
 - Buffer SIP Calls:
 - Re-registration Interval (in seconds): 360
 - Unregister on Boot:
 - Keep Alive Period: 10000
- Nightringer Settings:**
 - Enable Nightringer:
 - SIP Server: 10.0.0.253
 - Remote SIP Port: 5060
 - Local SIP Port: 5061
 - Outbound Proxy: [empty]
 - Outbound Proxy Port: 0
 - User ID: 241
 - Authenticate ID: 241
 - Authenticate Password: [masked]
 - Re-registration Interval (in seconds): 360
- RTP Settings:**
 - RTP Port (even): 10500
 - Jitter Buffer: 50
 - SRTP: Disabled
- Call Disconnection:**
 - Terminate Call after delay: 0
- Codec Selection:**
 - Force Selected Codec:
 - Codec: PCMU (G.711, u-law)

Buttons at the bottom: Save, Reboot, Toggle Help

If the credentials have been entered correctly the device should now be registered with Leap. This can be verified on the home tab of the web interface or on the Leap Device page.

Figure 4-3: Home Tab – Registered



5.0 Using a CyberData Loudspeaker in a Leap Telecom system.

CyberData loudspeakers are designed with IP Paging in mind. Supporting both SIP and Multicast that allows the loudspeakers to work with individual addressability or mass notification scenarios.

5.1 Setting up a Multicast priority

CyberData devices support multicast that works in a priority system, where a higher priority will always supersede a lower priority. For example, a multicast page to priority 4 would play over a background music stream at priority 0. SIP Calls are treated as priority 4.5.

CyberData devices also have an Emergency Multicast Priority, priority 9, which will always play at max volume regardless of setting, by design.

Figure 5-1: Multicast Tab

Multicast Settings

Enable Multicast Operation:

Priority	Address	Port	Name	Buffer	Beep	Relay
9	239.168.3.10	11000	Emergency	<input type="checkbox"/>	<input type="checkbox"/>	<input type="checkbox"/>
8	239.168.3.9	10000	MG8	<input type="checkbox"/>	<input type="checkbox"/>	<input type="checkbox"/>
7	239.168.3.8	9000	MG7	<input type="checkbox"/>	<input type="checkbox"/>	<input type="checkbox"/>
6	239.168.3.7	8000	MG6	<input type="checkbox"/>	<input type="checkbox"/>	<input type="checkbox"/>
5	239.168.3.6	7000	General Announcements	<input type="checkbox"/>	<input type="checkbox"/>	<input type="checkbox"/>
4	239.168.3.5	6000	MG4	<input type="checkbox"/>	<input type="checkbox"/>	<input type="checkbox"/>
3	239.168.3.4	5000	MG3	<input type="checkbox"/>	<input type="checkbox"/>	<input type="checkbox"/>
2	239.168.3.3	4000	MG2	<input type="checkbox"/>	<input type="checkbox"/>	<input type="checkbox"/>
1	239.168.3.2	3000	MG1	<input type="checkbox"/>	<input type="checkbox"/>	<input type="checkbox"/>
0	239.168.3.1	2000	Background Music	<input type="checkbox"/>	<input type="checkbox"/>	<input type="checkbox"/>

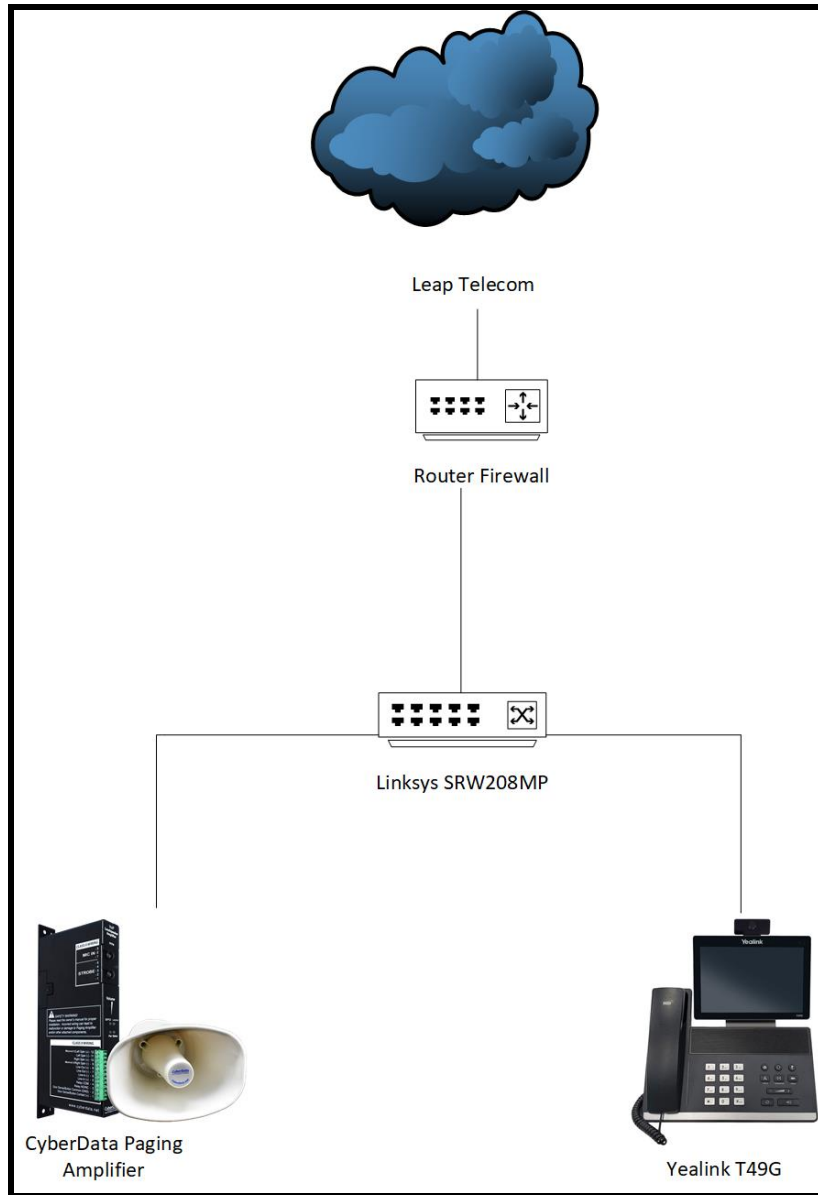
Polycom Default Channel: ▼

Polycom Priority Channel: ▼

Polycom Emergency Channel: ▼

6.0 Setup Diagram

Figure 6-1: Interoperability Test Infrastructure



7.0 Contact CyberData Corporation

Sales

For sales-related questions, please visit our [Contact CyberData Sales](#) web page for more information.

Technical Support

For CyberData Technical Support, please submit a [Contact CyberData VoIP Technical Support](#) form on our website.

The CyberData VoIP Technical Support Contact form initiates a troubleshooting ticket which CyberData uses for quality assurance purposes.

Additionally, the Contact VoIP Tech Support form tells us which phone system you are using, the make and model of the network switch, and other essential troubleshooting information we need to efficiently assist with a resolution. Please also include as much detail as possible in the Describe Problem section of the form. Your installation is extremely important to us.

Documentation Feedback

We realize changes to the software or hardware of the Leap Telecom solution may render this document obsolete. We welcome and encourage documentation feedback to ensure continued applicability.